

(m)Learning as enabler for future employability

How mobile technology improves youth employability

George Held

Dubai

November 20, 2013

✓ Huge increase in 15-24 year old population offers an opportunity for catalyzing change and bringing in fresh ideas and new energy

✓ Many are grappling with the challenge of providing young people with meaningful work opportunities and concerned about the growing number of youth who are disillusioned about their futures.

✓ 74.8 million youth between 15 and 24 years were unemployed in 2011, an increase of more than 4 million since 2007.

✓ Globally, the youth unemployment rate is almost 13%, and youth are nearly three times as likely as adults to be unemployed.

✓ The use of mobile devices to connect youth to education, workforce training and development, and job opportunities is an obvious solution. Training youth with ICT skills seems like a quick fix that could resolve the skills gap.



ICT skills to strengthen youth employability

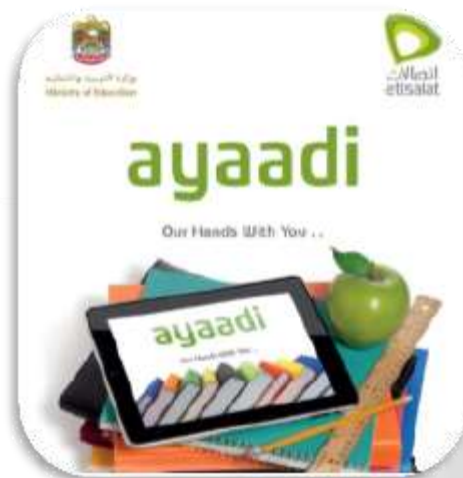
The use of ICT to strengthen youth employability in the fast growing economies should to be pursued vigorously.



To be clear: ICTs aren't the only route to improving the employability of youth, but it should be used as a key tool because of the anticipated growth potential and youth employability.



Interactive learning



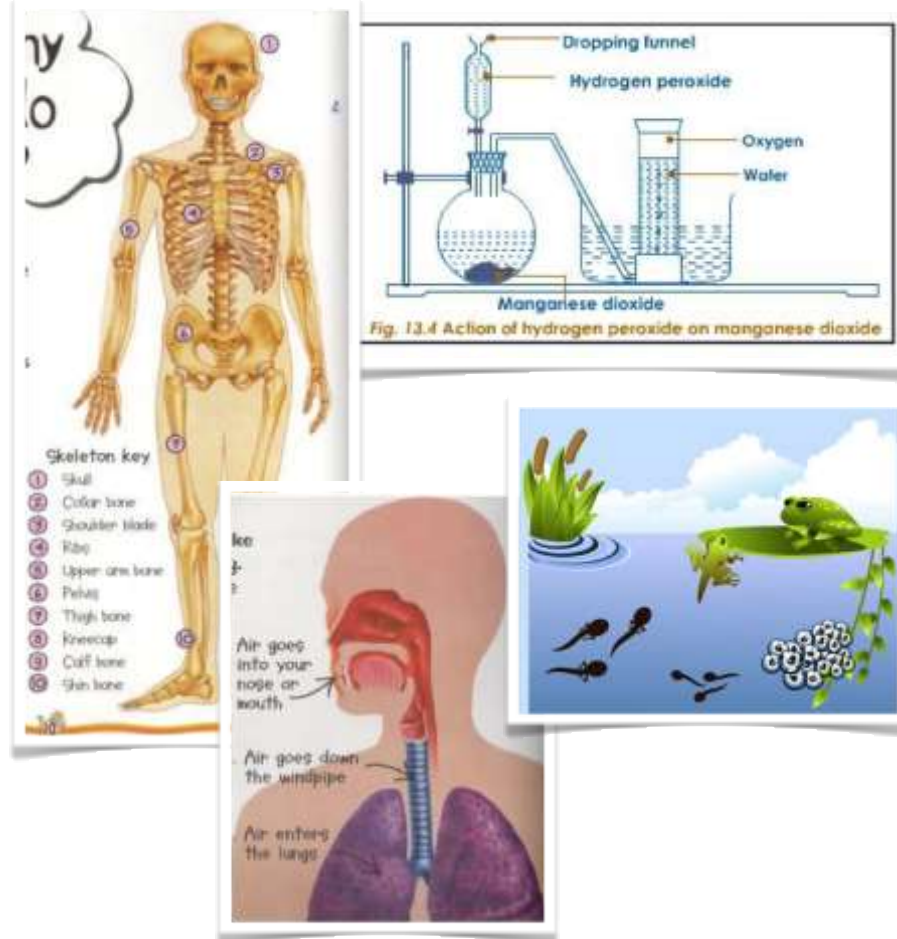
Augmented Reality based learning



LEARNING

e

Augmented
reality based
interactive
learning



CONNECTIVITY

Etisalat invested 80 Mill USD in building fiber-optic connectivity to 268 schools and Universities in UAE



More than 13,864 internet access points have been installed; the biggest number ever existed in one project in the Middle East.

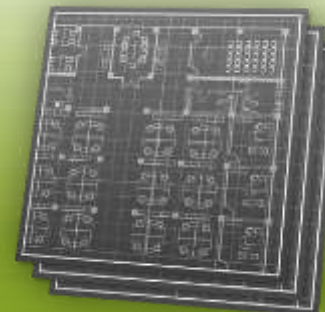
The project needed 1.7 million working hours to be accomplished and cables with length equal to the distance between Abu Dhabi and London were installed



Welcome to EBTIC's indoor localization solution



Using combination of Entropy-based location Fingerprinting and Time of arrival Based Localization identification and mitigation



Identify user geographical location with the accuracy of 3 meters at the indoor locations where GPS coverage does not exist and Multipath Propagation is not possible as line-of site is not available in WiFi coverage



Etisalat Mobile Baby – creating sustainable employment and saving lives through ICT skills

Etisalat Mobile Baby program is a **complete suite of services** enabling birth attendants and midwives to ensure safer pregnancies/ deliveries by enabling them to quickly and accurately identify, communicate and act on obstetric emergencies. It offers:

Ultrasound based remote monitoring of pregnancy evolution

Step by step protocol to identify and report danger signs during labour and delivery

Money on the phone to pay for emergency transportation

Communication with referral facility indicating emergency transfer and requirements on arrival



**Let's innovate together to make a
difference**