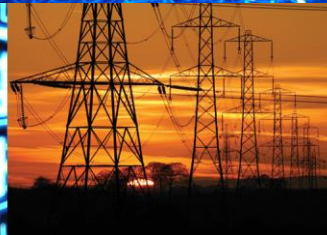
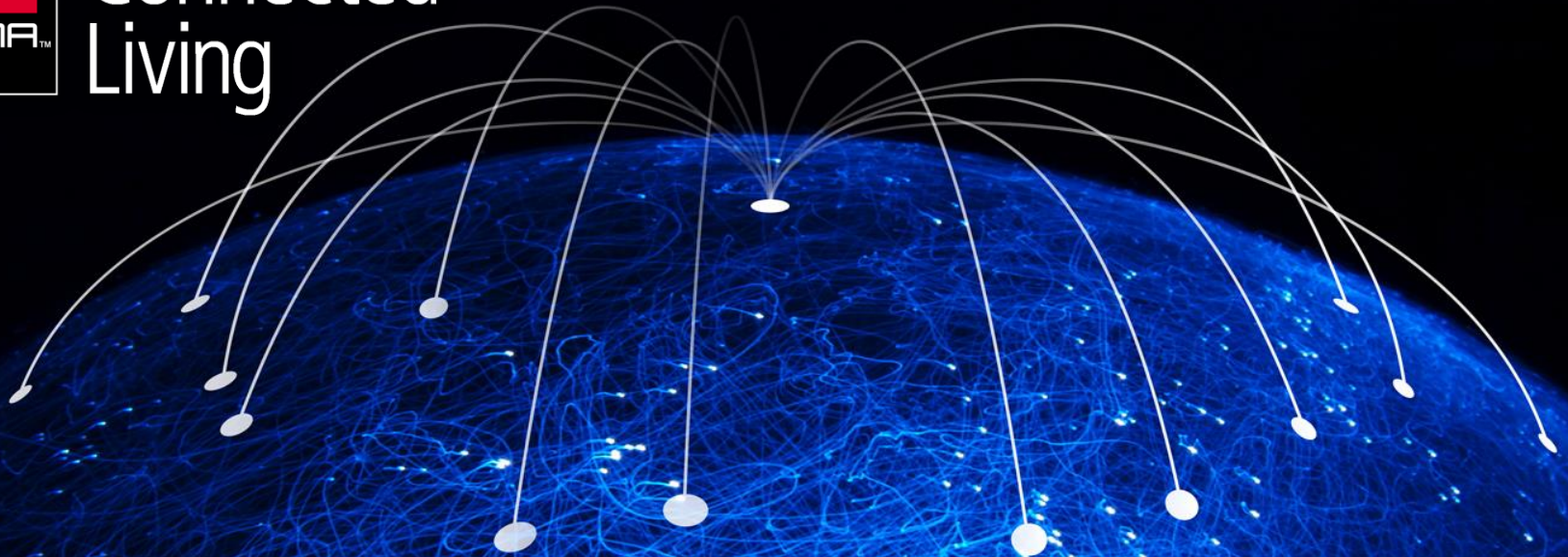




Connected Living

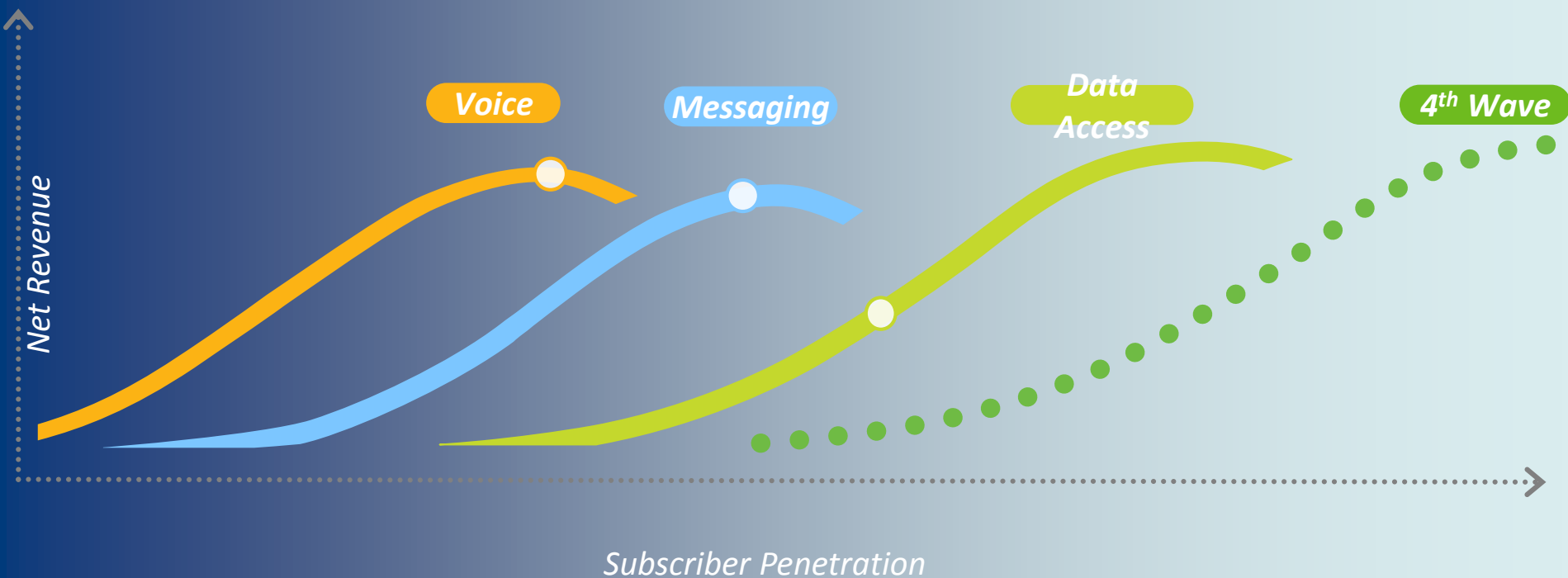


GSMA Connected Living Programme Mobilising the Internet of Things

Shanghai, June 2014

Chris Penrose, SVP Emerging Devices AT&T Mobility and
Chair, Connected Living Programme Leadership Group

The Wireless Revolution



Source: Chetan Sharma – Mobile
Future Forward



Connected Living Programme



Programme:

- GSMA and Operator Industry initiative to accelerate the growth and development of the Internet of Things
- Our vision: To enable the Internet of Things, a world in which consumers and businesses enjoy rich new services, connected by an intelligent and secure mobile network.

Our aim:

- The GSMA Connected Living programme is an initiative to help operators add value and accelerate the delivery of new connected devices and services in the M2M market. This is to be achieved by industry collaboration, appropriate regulation, optimising networks as well as developing key enablers to support the growth of M2M in the immediate future and the IoT in the longer term
- Supported by the wider industry ecosystems and lead by 8 leading mobile operators



at&t



中国移动通信
CHINA MOBILE

China
unicom中国联通



Deutsche
Telekom

NTT
docomo



Telefonica



telenor

GSMA Connected Living – “Mobilising the Internet of Things”

Network Efficiency

Define guidelines for optimal utilisation of the network by M2M services

Future Network

Define future network requirements & capabilities to support M2M services

Remote Provisioning

Embedded SIM commercial solution available and becomes a standard

Differentiated Machine SIM

Differentiated regulatory or policy treatment of the Machine SIM

Promote and gather requirements

Promote and gather requirements

Promote and gather requirements

Promote and gather requirements

Priority Ecosystem Engagement
Special Interest Groups – Automotive and Health
Future Proposed – Education, Transportation & Utilities

How to get involved in the Connected Living programme



GSMA Connected Living – “Mobilising the Internet of Things”

Network Efficiency

Define guidelines for optimal utilisation of the network by M2M services

Primary contact:

Kevan Taylor

ktaylor@gsma.com

Future Network

Define future network requirements & capabilities to support M2M services

Primary contact:

Svetlana Grant

sgrant@gsma.com

Remote Provisioning

Embedded SIM commercial solution available and becomes a standard

Primary contact:

Craig Aldridge

caldridge@gsma.com

Differentiated Machine SIM

Differentiated regulatory or policy treatment of the Machine SIM

Primary contact:

Anna Campbell

acampbell@gsma.com

Email: connectedliving@gsma.com to track progress or join the Special Interest Groups

Visit www.gsma.com/connectedliving for more information on the Connected Living Programme, upcoming events & Industry Research

GSMA Connected Living Programme Mobilising the Internet of Things

The background of the slide features a dark, textured globe. A dense web of thin, light-grey lines represents a global network, with many lines converging at a central point near the top. Several thicker lines with circular endpoints radiate from this central point to various locations on the globe's surface. The text "Thank you" is centered over the globe in a large, white, sans-serif font.

Thank you