

GSMA™

# eSIM Summit MWC23

Unlock the full potential of eSIM to better  
scale with minimum impact on the planet

MWC Barcelona Hall 7 | Wednesday 1st March 2023  
09.30 - 11.30



**Mikkel Escartin**  
VP Digital Solutions Business Line  
IDEMIA

**MWC**  
GSMA

Platinum:  IDEMIA **KORE**

Gold: **THALES**  **TRUPHONE**

# eSIM MARKET IS SKYROCKETING

**84**

Number of eSIM-capable smartphones launched

**6.9B**

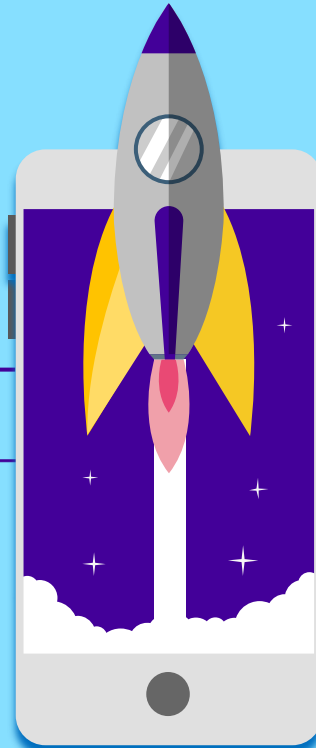
Total number of eSIM smartphone connections by 2030

**50%**

of total smartphone connections will rely on eSIM technology by 2028

**10%**

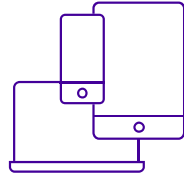
of mobile operators will prioritize eSIM in 2023 over traditional removable SIM



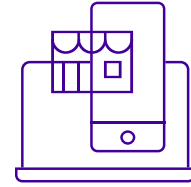
# The great potential of eSIM



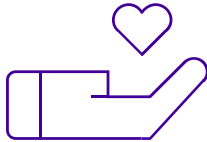
**New  
use cases**



**New connected  
devices**



**New sales  
channels**



**Better user  
experience**



**Cost  
savings**



**Limited impact  
on the planet**

## SIM card

Logistics / Distribution

Stock

Packaging

Losses

Obsolescence

SIM inventory management

Manufacturing

## eSIM / iSIM

Logistics / Distribution

Stock

Packaging

Losses

Obsolescence

Profile inventory management

eSIM generation & download

## eSIM / iSIM with IDEMIA

Logistics / Distribution

Stock

Packaging

Losses

Obsolescence

Profile inventory management

eSIM generation & download

## Just-in-Time eSIM Profile Generation

# Any

**eSIM Profile element  
can be changed**

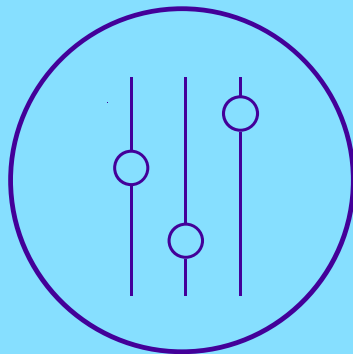
# Anytime

**before the download  
or during the download**

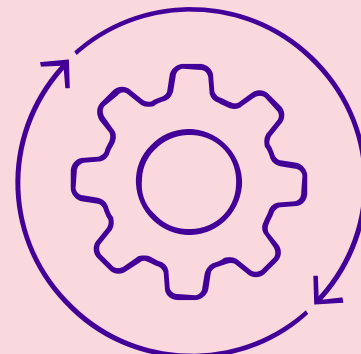
## Three IDEMIA game-changing features



**eSIM Profile  
Dynamic Adaptation**



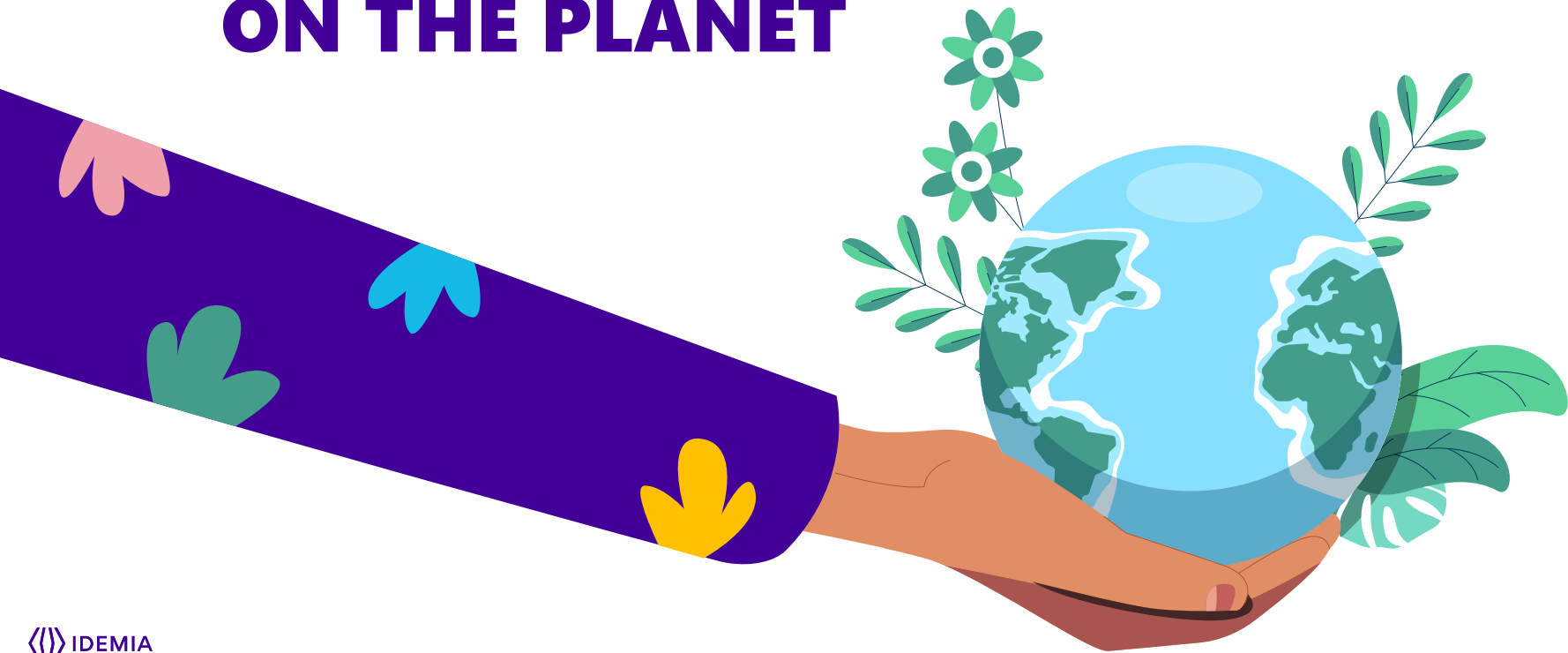
**eSIM Profile  
Customization**



**eSIM Profile  
Reprocessing**

# SCALE

WITH MINIMUM IMPACT  
ON THE PLANET



# WHAT IDEMIA DOES TO REDUCE THE ENVIRONMENTAL IMPACT OF ESIM

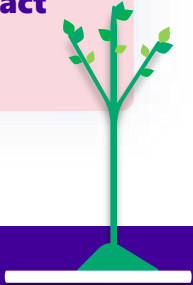


**Optimizing your  
eSIM operations with  
less Stock Keeping Units  
(SKU)**

**Monitoring, analyzing  
and limiting our  
solutions' carbon  
emissions**

**Capacity to scale securely  
with the right amount of  
resources**

**Choosing the  
right partners to  
help you scale with  
minimum impact**



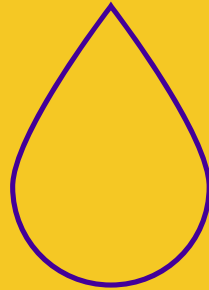


# WHY USING MICROSOFT AZURE IS MORE ECO-FRIENDLY THAN TRADITIONAL DATACENTERS



**100/100/0**

- > 100% of electricity use,
- > 100% of the time,
- > 0 carbon energy purchases by 2030



**95%**

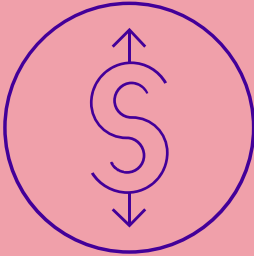
Water use reduction in  
datacenters operations  
by 2024



**72 – 98%**

more carbon efficient  
than traditional  
datacenters

# UNLOCKING THE FULL POTENTIAL OF ESIM TECHNOLOGY WITH IDEMIA



**Cost reduction  
& optimized  
processes**



**Limited impact  
on the planet**



**Increased  
security for  
mitigating  
risks**