

Mobile Connect – eIDAS

Mobile Connect for eIDAS

Strong Multi-Factor
Authentication using the
mobile device including
consent capture

Distributed and
federated architecture

Privacy by design

Flexibility of approaches

High Level View: Mobile Connect for eIDAS cross-border authentication

Citizens connect to national Public Service or Private Service, cross borders



MEMBER STATE A



Leverage existing strong authentication mechanisms



GSMA discovery

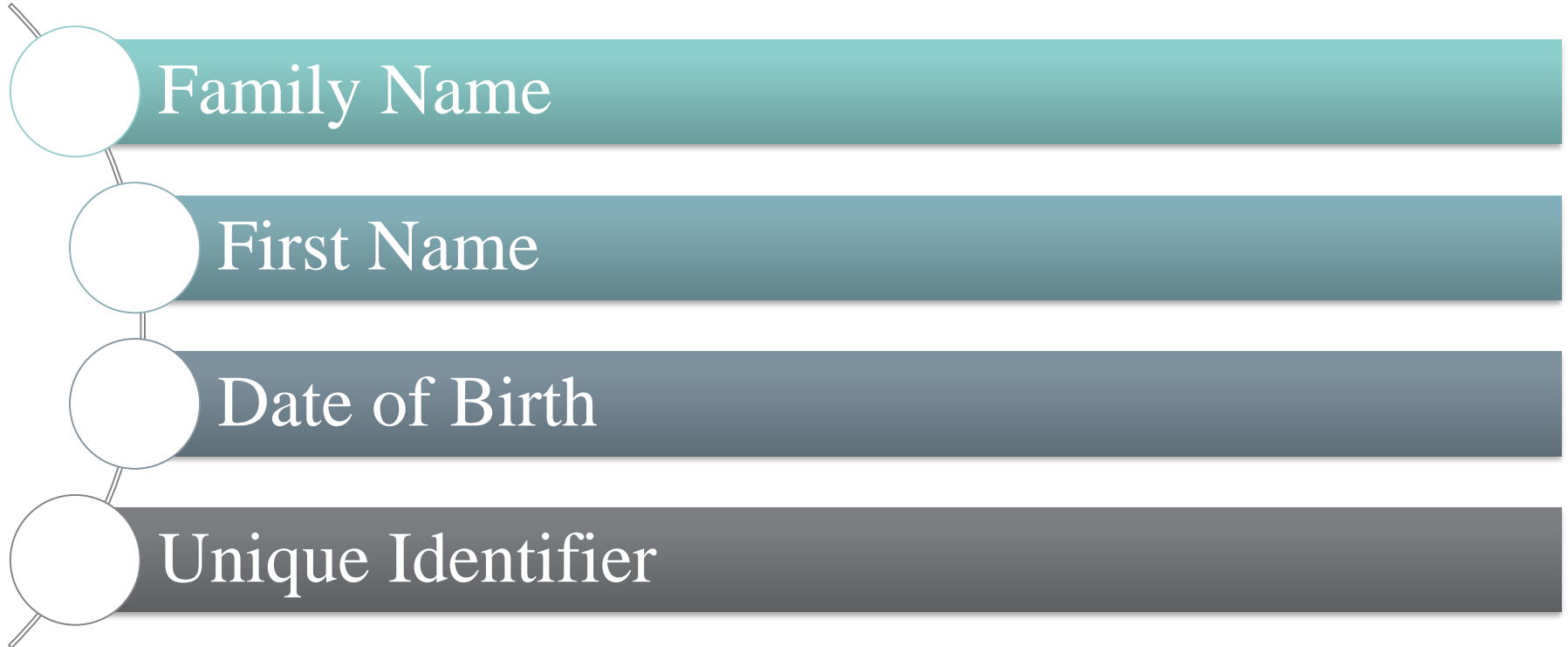


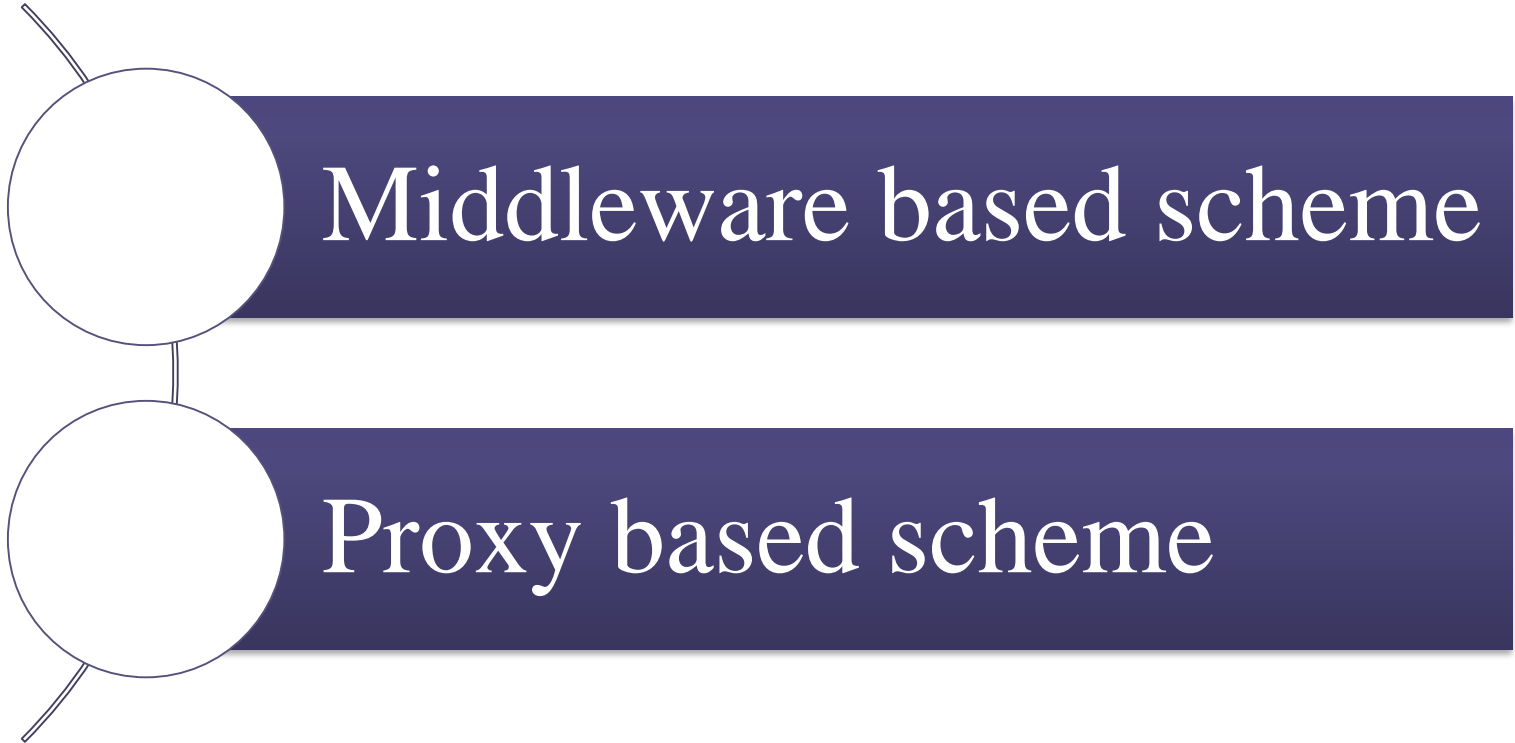
Simple user experience

Federation using GSMA discovery

Authentication service on both ends

MEMBER STATE B





Architecture 1: Middleware approach

- Cross border discovery/federation and Authentication through Mobile Connect
- Minimum data attributes *proxied through Mobile Connect* from the government repository

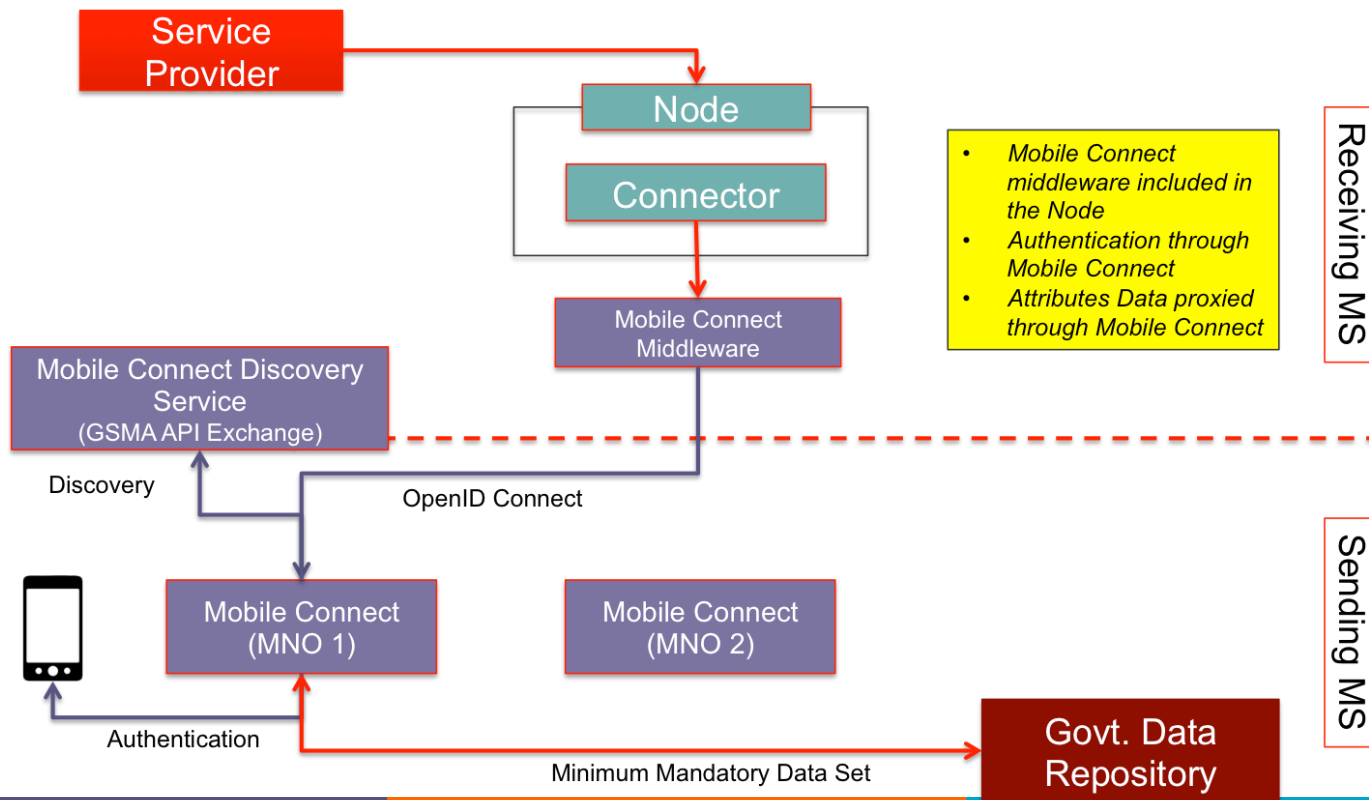
Architecture 2: Middleware approach

- Cross-border discovery/federation and Authentication through Mobile Connect
- Minimum data attributes *directly accessed through the middleware* from the government repository

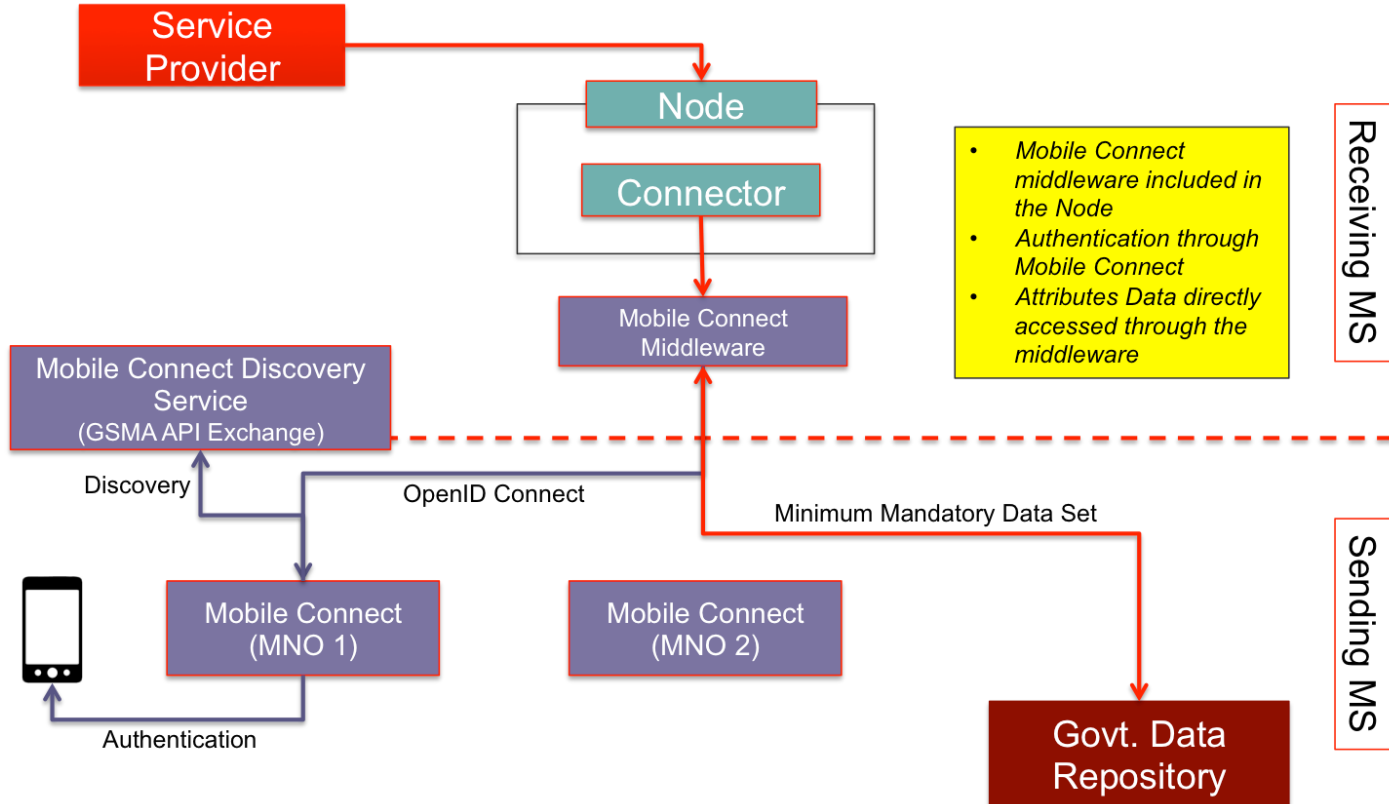
Architecture 3: eIDAS Node Proxy based approach

- Local federation/discovery and Authentication through Mobile Connect

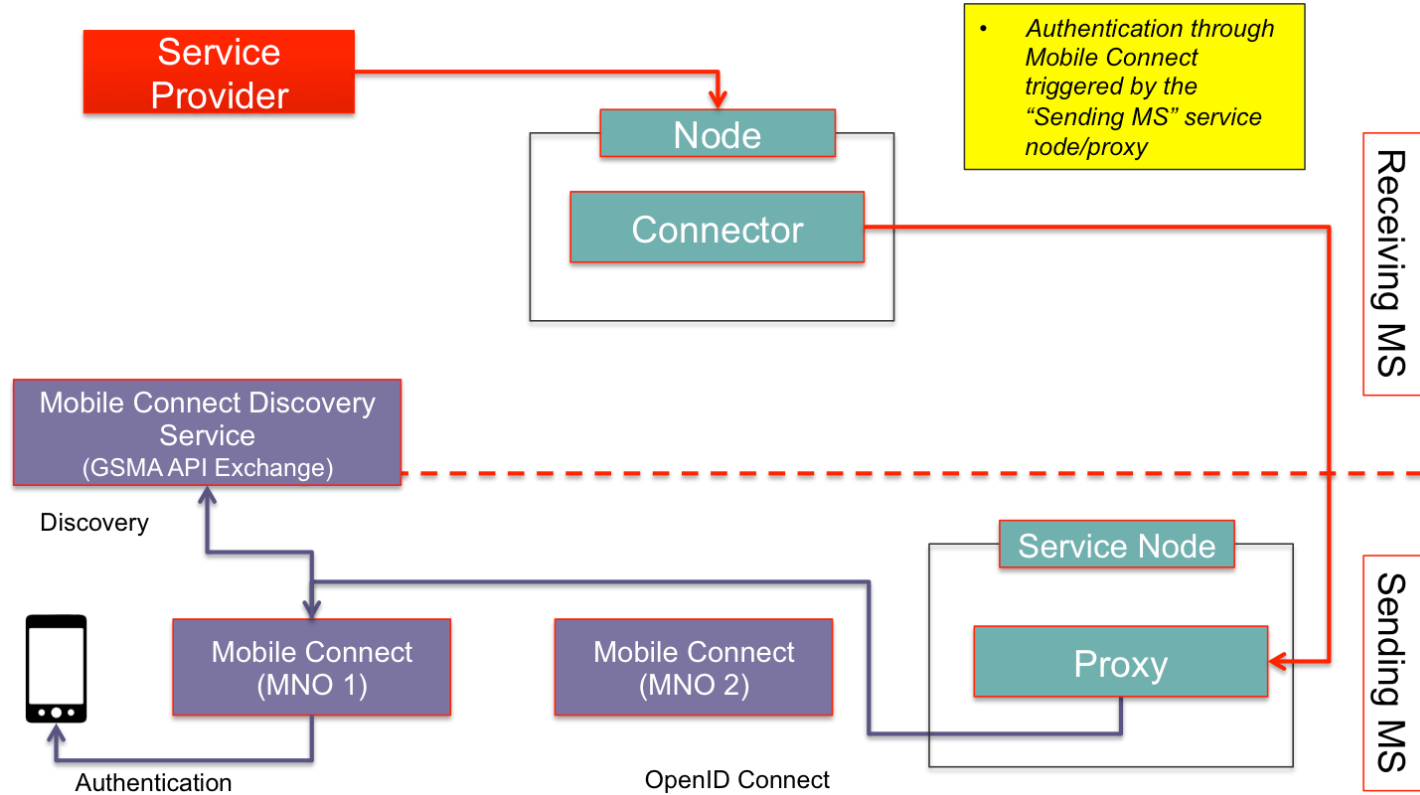
Architecture Option 1 – Middleware Approach



Architecture Option 2 – Middleware Approach



Architecture Option 3 – eIDAS Node Proxy based approach



A multi-stakeholders Working Group

Deploy a scalable pilot with commercial potential which meets governments requirements

Mobile Connect as a de-facto digital identity solution for Europe

Goal:

- Create an operational forum for public – private cooperation to accelerate eIDAS implementations for mobile operators and the wider digital identity ecosystem via Mobile Connect

Objectives and work-streams:

- Technical and regulatory: to ensure the interoperability of Mobile Connect with eIDAS and facilitate common understanding of terminology and requirements across stakeholders
- Business models and commercial frameworks: to clarify the role mobile technologies and business models arising within the eIDAS ecosystem
- Operational and technical implementation: cross-border interoperability design and testing between Mobile Connect and eIDAS Nodes technical specifications [*Middleware or eIDAS reference architecture options, LOA2 and LOA3*]

Expected impact:

- Using Mobile Connect as a cross-border secure and seamless solution allowing citizens, business and public administrations to authenticate, authorise transactions and provide consent to the validation or sharing of their data via their mobile phones



If you would like more information, please contact the GSMA via:

mobileconnect@gsma.com

+44 (0) 20 7356 0600

www.gsma.com/identity

Follow the GSMA on Twitter: @GSMA

GSMA London Office
The Walbrook Building, 25 Walbrook, London EC4N 8AF