

SKT MEC Status

Marie-Paule Odini

Distinguished Technologist, HPE Telecom Division



Dongmyoung Kim

Research Engineer in Cloud Labs,
SK Telecom





SKT MEC Status

Dongmyoung Kim, 5GX Cloud Labs, SK Telecom

Marie-Paule Odini, Distinguished Technologist, HPE



October 2020

SKT evolution towards 5G MEC

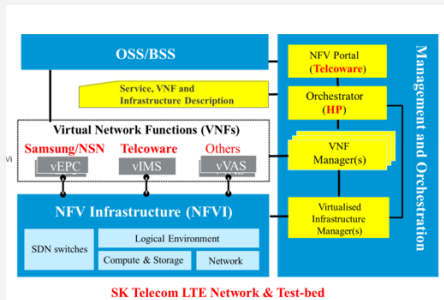
2015 – 1st vEPC / vIMS
commercial deployment

Dec 2018 – 1st 5G Launch

2020 – 5G MEC / Global MEC

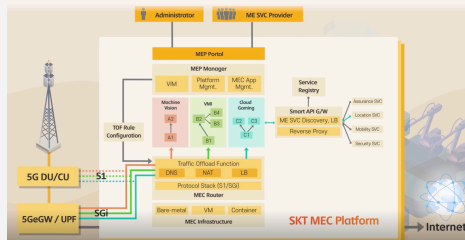
2014

ETSI NFV POC
1st Multi vendor vEPC



2018

MEC Demo
Smart Vision / Gaming
@ MWC'19



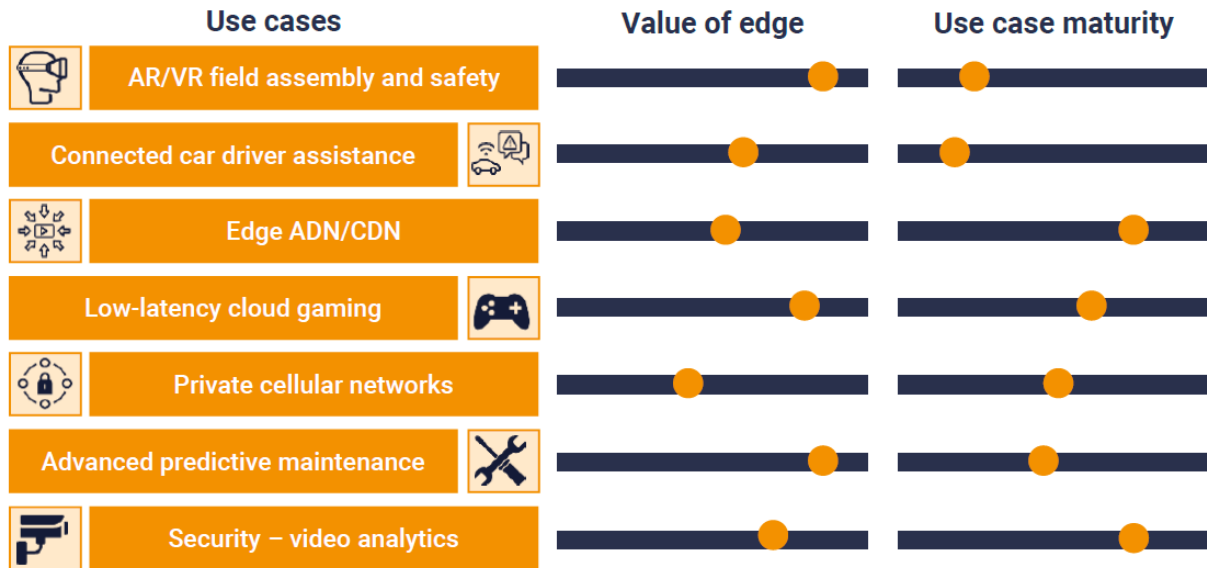
2020

SKT partner HPE
On 5G MEC



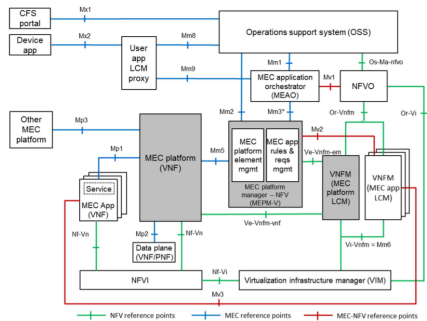
Typical Edge Use Cases

BUSINESS FOCUS



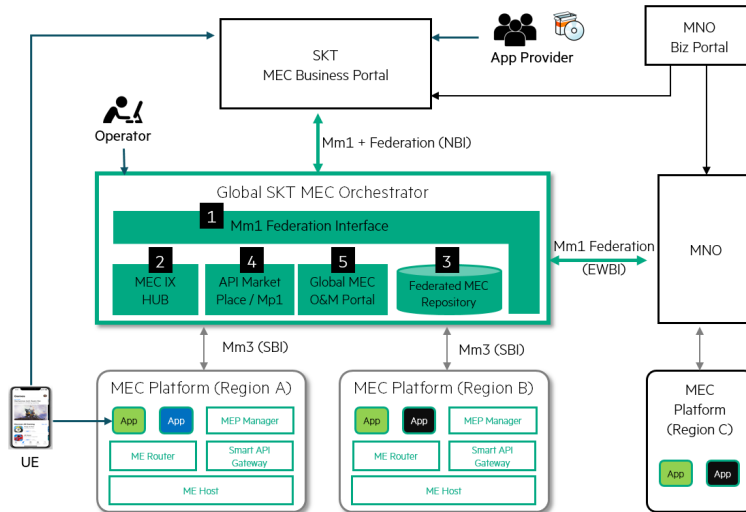
Source: STL Partners

SKT 5G Global MEC – aligned with ETSI and GSMA

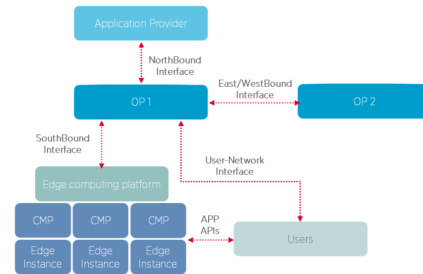


ETSI MEC NFV Architecture

SKT MEC Federation Architecture



Mm1, Mm3, Mp1 are ETSI MEC APIs



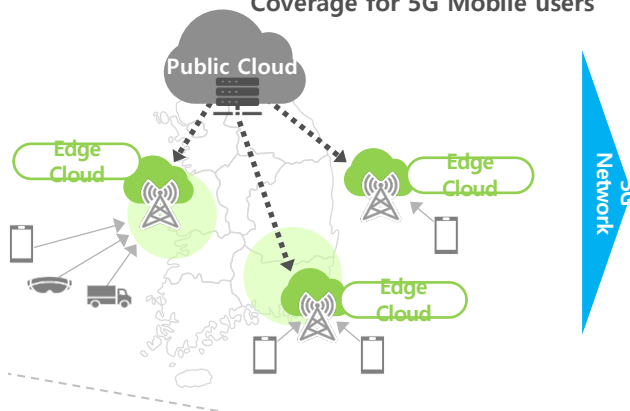
GSMA Operator Platform architecture

SKT 5G MEC Infra & Service Status

SKT is ready for both nationwide B2C MEC service using 'Public Edge' and private enterprise MEC service using 'On-site Edge'

Public Edge

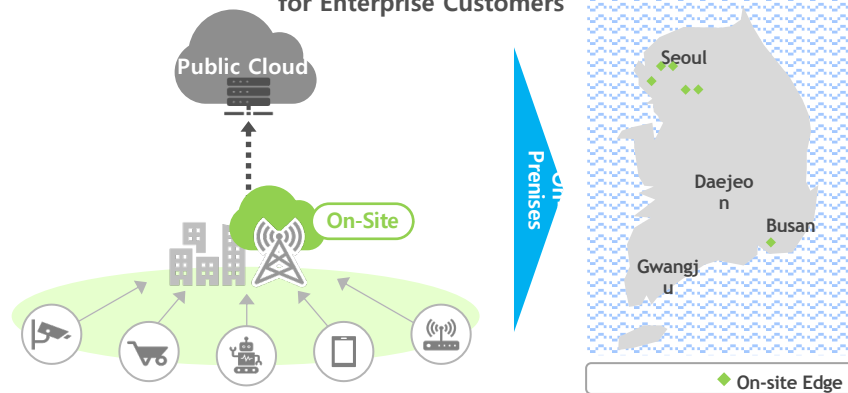
"Nationwide MEC Service Coverage for 5G Mobile users"



- AR/VR Services
- Massive/Live Video Streaming, mCDN
- Autonomous Driving (drone, V2X)

On-site Edge

"Private Local MEC Service for Enterprise Customers"



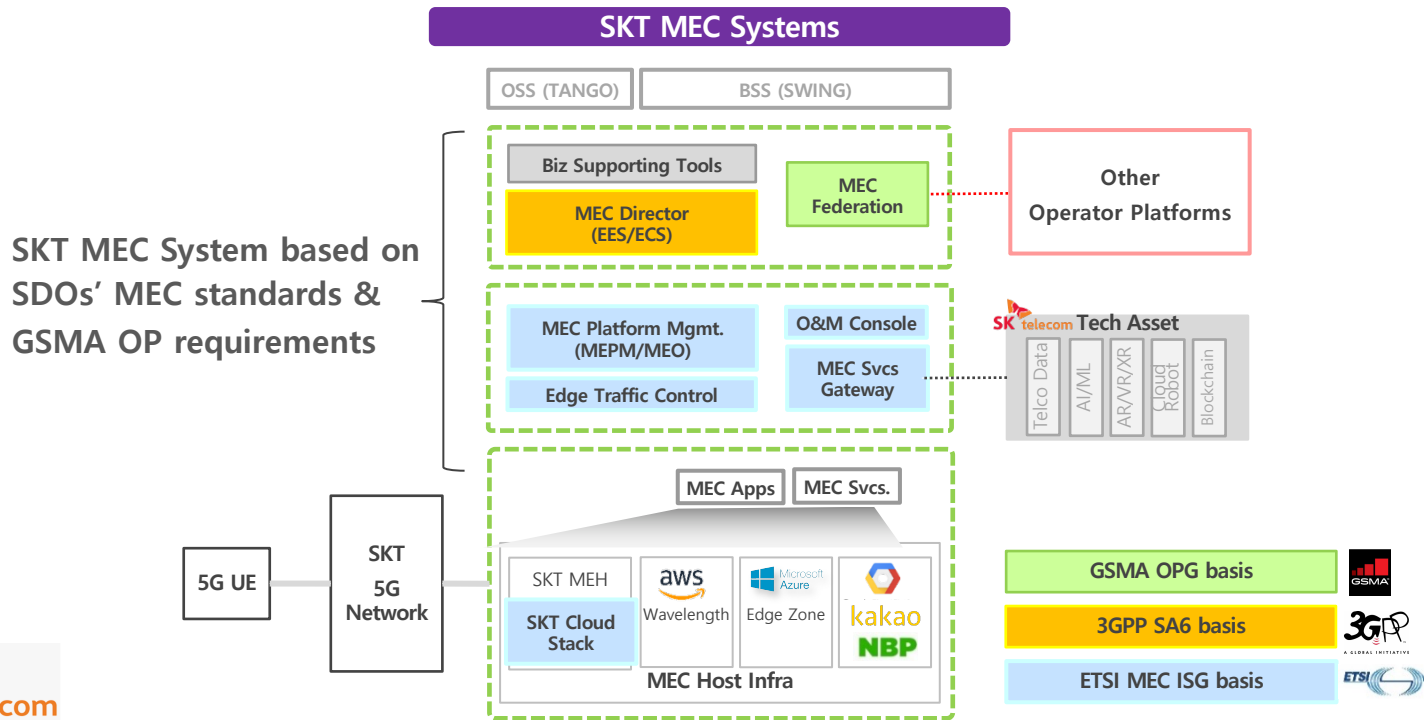
- Smart Factory – Cloud Robot, Video Analytics, AI
- Smart Office/Branch – AR/VR Training

Collaboration with global CSPs



SKT's Commercial MEC System Architecture

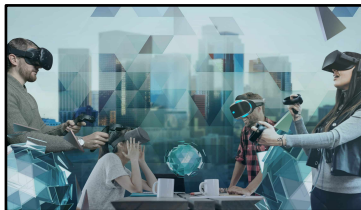
SKT MEC system working as 'Service Delivery Platform' to support various edge use cases



SKT MEC Business Cases

Commercial
Service
in '20

Cloud VR / Media



Smart Robot



Vision AI



Manufacturing / Lab

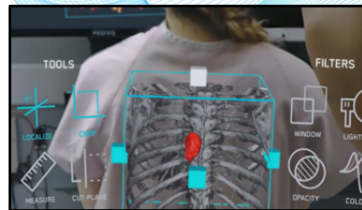


SKT 5G MEC Services

PoC/Trial
in '20



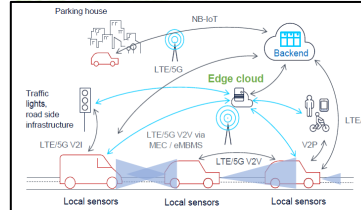
Cloud Game



Smart Hospital



Smart Office



Automotive

The background features a complex network of thin grey lines connecting various points, forming a web-like structure. Scattered throughout are numerous triangles of different sizes and orientations, some solid and some outlined. The overall aesthetic is modern and technological.

Thank You

