

Mobile Innovation Report 2026



THE HO

THE HOME OF MOBILE INNOVATION

THE HOME OF MOBILE INNOVATION

THE HOME OF MOBILE INNOVATION

THE HOME OF MOBILE INNOVATION



About the GSMA

The GSMA is a global organisation unifying the mobile ecosystem to discover, develop and deliver innovation foundational to positive business environments and societal change. Our vision is to unlock the full power of connectivity so that people, industry, and society thrive.

Representing mobile operators and organisations across the mobile ecosystem and adjacent industries, the GSMA delivers for its members across three broad pillars: Connectivity for Good, Industry Services and Solutions, and Outreach. This activity includes advancing policy, tackling today's biggest societal challenges, underpinning the technology and interoperability that make mobile work, and providing the world's largest platform to convene the mobile ecosystem at the MWC and M360 series of events.

We invite you to find out more at [gsma.com](https://www.gsma.com).

About the GSMA Foundry

The GSMA Foundry is the go-to place for cross-industry collaboration and making positive change happen, supported by leading technology organisations and companies. By bringing together members and key industry players, engaging, and unifying the end-to-end connectivity ecosystem, the GSMA Foundry is solving real-world industry challenges.

Find out more and get involved at <https://www.gsma.com/foundry>

THE HOME OF MOBILE INNOVATION

THE HOME OF MOBILE INNOVATION

THE HOME OF MOBILE INNOVATION

THE HOME OF MOBILE INNOVATION





Contents

01. Foreword	1
02. Introduction	2
03. GSMA Foundry Impact	3
04. GSMA Foundry Milestones and 2026 Vision	5
About the GSMA Foundry	5
Key priorities for 2026	8
Why you should get involved	10
05. Driving Innovation Through Collaboration	12
European Space Agency	12
Barcelona Supercomputing Center	13
IBM	14
GTI	15
06. New Partnerships and Strategic Relationships in 2025	17
Khalifa University	17
Circuit de Barcelona-Catalunya	18
Strategic Relationships	19
4YFN	19
Mobile World Capital	20
The International Artificial Intelligence Industry Alliance (AIIA)	21
07. Showcasing Projects	23
Trusted Caller Identity	23
Stopping Scams at the Source	24
Extending NTN Connectivity	25
5G-Advanced Intelligent Packet Core	26
Mobile Network for Thriving AI	27
Coordinating Agentic AI for Autonomous Networks	28
Faster Troubleshooting for Transport Networks	29
5G-Advanced Facilitates Multi-Robot Collaboration	30
Relieving the Pressure on Physicians	31
Circular Networks, Equipment Identifier	32
5G NTN Asset Tracking	33
NextWorks	34
Agentic AI	35
Africa AI Languages	36
08. Spotlight on Foundry Award Winners 2026	38
09. GSMA Connected Communities	42
10. Get involved	45



01. FOREWORD

As technology advances and the world changes, the mobile industry is evolving rapidly. With 5G Advanced networks entering commercial service and AI gaining traction, renewal and reinvention are everywhere.

But amid all the dynamism and innovation, it's vital that the global mobile industry doesn't compromise on the cooperation that has always underpinned its success. One of the goals of the GSMA is to provide the trusted, interoperable, future-ready technical foundations that support global digital economies, public infrastructure, and inclusive growth. The GSMA Foundry plays an increasingly important role in enabling us to fulfil that objective.

Trust is a clear example. As scams and fraud continue to grow in scale and sophistication, technical responses must be built into the fabric of our networks. Through the Foundry, GSMA members are collaborating on initiatives that embed verifiable identity, cryptography and network-level intelligence directly into telecoms infrastructure. Interoperability is fundamental to this work: antifraud mechanisms such as Open Verifiable Calling must operate seamlessly across networks if they are to be effective.

Interoperability is equally essential as we move into the next phase of network evolution. The capabilities unlocked by 5G Advanced, and the integration of non-terrestrial networks with existing cellular infrastructure, will only deliver their full value if they function as part of a coherent global system. The Foundry's work in this area is helping ensure that connectivity remains reliable and continuous, wherever users are.

Beyond connectivity, the Foundry's strategic partnerships are enabling GSMA members to evaluate and adopt advanced satellite capabilities, as well as AI, cloud-native core networks, digital trust architectures and security. Collaboration with leading research and supercomputing institutions has already supported the development of sovereign AI, low-resource language models and production-grade generative AI, aligned with regional and national priorities.

It is particularly encouraging to see so many Foundry projects progressing from proof of concept to largescale deployment. This reflects a deliberate strategic focus of building long-term ecosystem capability and durable innovation capacity, rather than simply completing short-term projects.

At the same time, the Foundry must continue to look ahead. As technologies such as quantum networking, sensing and compute mature, they will become foundational infrastructure layers alongside AI and non-terrestrial networks. By expanding into these domains, and through the development of a unified global lab network and vertical innovation architecture, the Foundry is laying the groundwork to accelerate future cross-sector adoption and deployment.

Change may be constant, but the principles that underpin the mobile ecosystem endure. Through the GSMA Foundry, we will continue to advance collaboration, interoperability and trust – ensuring that the industry's technical foundations remain resilient and future-ready.



Alex Sinclair - Chief Technology Officer, GSMA



02. INTRODUCTION

Over the past five years, GSMA Foundry has firmly established itself as the global home of mobile innovation. We have built a highly effective open innovation model that connects operators, innovators, academia, industry and investors. By bringing great minds together, the Foundry turns promising ideas into scalable deployments with real-world impact across telecoms and the broader economy.

In 2025, we decisively shifted pilots into production, scaling proven solutions across networks, markets and regions. We demonstrated how next-generation connectivity – enabled by 5G Advanced – is underpinning another wave of innovation in physical AI, robotics, experience monetisation, non-terrestrial networks (NTNs) and other exciting fields. Through the NTN Community, the Foundry is accelerating the convergence of terrestrial networks and NTNs, positioning satellite and aerial platforms as core components of future mobile infrastructure.

Closer to earth, increasingly sophisticated private 5G networks are enabling organisations to tailor connectivity precisely to their requirements. Through our new Private Networks Community, we are creating clarity for mobile operators and enterprises around architectures, commercial models, and deployment pathways.

We are, of course, also heavily involved in the development of artificial intelligence (AI), which is proving to be one of the most disruptive technologies of our time. The Foundry's multiple AI programmes have moved beyond theory to delivery, enabling sovereign AI models, production-grade deployments of generative AI, and the rollout of operational AI across live operator environments.

Meanwhile, the Foundry is helping the GSMA to coordinate a global response to fraud and scams across the ecosystem. Our project demos at MWC26 in Barcelona will showcase how the industry can embed trust, verifiable identity, and network-level intelligence directly into telecom infrastructure.

Much of our work is enabled by strategic partnerships. Our ongoing collaborations with key institutions, such as the European Space Agency (ESA), Barcelona Supercomputing Center (BSC) and other renowned research bodies, are consistently turning high-potential ideas into scalable global platforms with real-world impact. In 2026, we will continue to deepen these partnerships, expand funding pathways, and launch new challenges across AI, NTN, quantum technologies, and connected industries.

Another priority for this year is the development of a global lab network to create a unified, telecom-focused innovation infrastructure. By bringing together labs, telcos, startups, technology providers, universities, and industry partners, our "labs-as-a-service" platform eliminates silos and duplicated effort, and identifies opportunities for genuine innovation.

As this report shows, the work of the Foundry is wide ranging. But it is also highly coherent. All of our initiatives are carefully calibrated to further our mission to transform telecom innovation into deployable solutions that create measurable value for operators, partners, economies, and societies worldwide.

If you'd like to be part of that, please get in touch and help us find the next great mobile innovations.



Richard Cockle - Head of GSMA Foundry



03. GSMA FOUNDRY IMPACT



Foundry Projects

80+ Projects delivered since **2021**



Projects Completed

14+ Projects completed in **2025**



GSMA Foundry Partners

59+

Foundry Partners



Since **2021**



Case studies

68 Case studies published



Videos

51 Videos delivered



Blogs

27 Blogs delivered



Interviews

47 Expert interviews delivered



Whitepapers

11 Whitepapers delivered





Innovation Spotlight Interview Series

Every 1-2 months, we showcase a Foundry partner who is driving innovation in the mobile industry. Join us for a conversation about the real-world challenges they're solving and the impact their technology is making. Watch on demand or join us for future events.

Launched June 2024

October 2025

Interview # 7



Azercell, SLTMobitel, IBM

Unlocking the Power of gen AI: Azercell & SLTMobitel's Journey with IBM WatsonX

<https://www.linkedin.com/events/7285259907547709440/>

Interview # 8



Barcelona/ Barca Innovation Hub, Omniscope

Empowering Sports Science through Precision Immunolo

<https://www.linkedin.com/events/7285259907547709440/gy>

Interview # 9



Mobile World Capital Barcelona

Enabling sustainable innovation with Mobile World Capital

<https://www.linkedin.com/events/7326531170014228480/>

Interview # 10



QazCode (Veon Group)

Closing the AI language gap – Qazcode's mission for digital inclusion

<https://www.linkedin.com/events/7285259907547709440/>

Interview # 11



Sateliot From Ground to Orbit

How Sateliot is Scaling 5G NTN for Global IoT

<https://www.linkedin.com/events/7383516884941344768/>

Find out more about the GSMA Foundry Innovation Spotlight Series:



5 Interviews in 2025



GSMA Foundry Innovation Showcase demos

on the GSMA Pavilion at MWC Events

66

Showcase demos since 2021



2025
11* **MWC Barcelona**
4 **Shanghai**

3 **IMC**
 * more to follow later in 2026

AI Use Case Library



December 2025

Launched at M360 MENA - November 2024

110+ 
AI Use cases delivered

25+ 
GSMA members contributing

Find out more about the GSMA Foundry AI Use Case Library:





04. GSMA FOUNDRY MILESTONES AND 2026 VISION

About the GSMA Foundry

The home of mobile innovation, GSMA Foundry is driving transformative change in telecommunications through strategic partnerships and the rapid deployment of cutting-edge solutions. Since it was established in 2021, the Foundry has become a go-to hub for cross-industry collaboration and business development. It has already enabled scores of GSMA members and other innovators to nurture new ideas, swiftly develop concepts, conduct commercial trials and deploy proven solutions that will shape the digital future.

By facilitating open innovation, the Foundry is helping mobile operators to maximise the impact of their investments and avoid duplicating efforts. To achieve these objectives, the Foundry is building strategic partnerships and collaborating with key stakeholders, while matching smart ideas and entrepreneurs with appropriate investors and other sources of funding. With a global mandate, the Foundry is nurturing everything from brand-new concepts and products in commercial trials right through to proven solutions that require scaling to a regional or global level.

In 2025, the Foundry focused on:

5G: Driving innovation and helping solutions scale globally

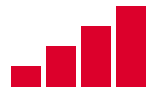
To help telcos move from monetising mobile traffic to monetising mobile experiences, the Foundry oversaw the 5G-Advanced Facilitates Multi-Robot Collaboration project. To demonstrate how 5G-Advanced connectivity can enable large-scale physical AI and multi-robot collaboration, China Telecom, ZTE, DroidUp and AgiBot developed the EasyOn-Robot platform - a purpose-built private 5G-Advanced solution.

EasyOn-Robot delivers ultra-reliable, low-latency, high-bandwidth performance—up to 2 Gbps uplink, sub-10 ms latency and 99.99% reliability—providing the deterministic connectivity required for real-time AI training, sensor fusion, high-precision positioning and coordinated autonomous robotics. By embedding essential 5G functions at the edge and removing reliance on a traditional core network, the platform shows how next generation 5G infrastructure can provide a foundational digital control layer for physical AI systems. EasyOn-Robot demonstrates that 5G-Advanced will be critical national infrastructure for robotics, automation and industrial intelligence, enabling scalable, secure and transferable deployment of multi-robot systems across factories, logistics, retail and smart environments worldwide.

NTNs: Fostering collaboration to develop satellite and drone connectivity.

The Foundry oversees the GSMA's expanding Non-Terrestrial Networks (NTNs) Community, which unites mobile network operators, satellite providers and vendors to accelerate the integration of terrestrial networks and NTNs. As they bring better connectivity to remote and underserved regions, NTNs are becoming a vital complement to terrestrial mobile infrastructure. NTN technologies leveraging (GEO/LEO/MEO) satellites, high-altitude platforms, and uncrewed aircraft systems promise to overcome the limitations of terrestrial networks.

Expert members in the GSMA NTN Community are addressing key technical and interoperability challenges as NTNs evolve to support direct-to-device (D2D) connectivity and enable integration with 5G and future 6G networks. More than 50 GSMA members participate in monthly meetings to share insights, align on priorities, and drive progress.



In 2025, the Community published its **first report**, providing a landscape overview of NTN opportunities and challenges. It has been downloaded 600 times, reflecting strong and sustained market interest. Overall engagement has grown significantly, with a 409% increase in visits to the NTN Community **website** year-on-year, demonstrating the rising importance of NTNs in the telecom ecosystem.

AI: Advancing AI and its integration into the mobile industry

In 2025, there were concrete deployments of AI across the telecom ecosystem. Some of these deployments were facilitated by the GSMA Foundry's partnership with the Barcelona Supercomputing Center (BSC), which was one of the first institutions to be awarded EU AI Factory status. Built around the MareNostrum 5 supercomputer, the BSC AI Factory has become a one-stop hub that has democratised access to high-performance computing, expert support, datasets, and training across strategic sectors including telecoms, technology, health, energy and finance.

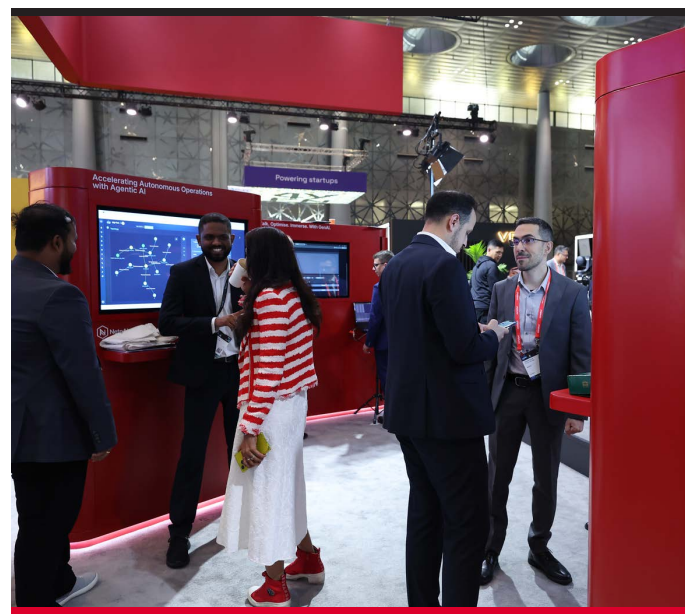
A major highlight of 2025 was BSC's foundational support to VEON subsidiary Qazcode in developing KazLLM, a commercially deployed 70-billion-parameter large language model in the Kazakh language, built

and launched in just nine months and already used in AI tutor applications. As well as demonstrating Europe's capability to deliver sovereign, large-scale generative AI, this success catalysed plans to scale similar models across VEON's footprint. After initially focusing on language technologies, BSC is now shifting to a broader AI agenda, particularly in tech and communications.

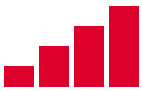
In parallel, the GSMA Foundry has partnered with other players to accelerate applied AI adoption globally: the collaboration with IBM WatsonX enabled operators, such as Azercell, SLTMobitel and KPN, to roll out production-ready generative AI projects, delivering tangible gains in network optimisation, customer experience and operational efficiency. Complementing this, the Foundry supported the GTI 5G-AxAI Development Programme and entered into new academic partnerships (e.g. Khalifa University) to progress AI-enhanced calling, customer service, and federated learning.



Foundry AI demonstrations featuring BubbleRan and Khalifa University at GSMA Pavillion MWC Doha 2025.



Foundry AI demonstrations featuring BubbleRan and Khalifa University at GSMA Pavillion MWC Doha 2025.



Private networks: Covering the technical and business dimensions

The GSMA Private Networks Community, which falls under the Foundry's remit, was launched at MWC Doha 2025. It initially focused on clarifying deployment models, architectures, and commercial pathways for private networks, addressing industry confusion and supporting informed decision-making for operators, enterprises, and regulators.

The Community's technical priorities include bridging PoC to production, providing deployment guides, best practices, and case studies, supporting device and spectrum availability, security and IT/OT integration. It is also exploring the business case for private networks and promoting knowledge sharing through workshops, events and white papers, with work planned on positioning and time-sensitive networking.

Fraud and scams: Restoring confidence in global communications

In 2025, GSMA Foundry built a coordinated portfolio of initiatives that target fraud at the identity, infrastructure and ecosystem levels. Central to this is Open Verifiable Calling (OVC), a global framework that embeds cryptographically-verifiable identity directly into voice calls. As a result, OVC enables trusted caller authentication, interoperable verification, and evidence-based trust across networks. Through mechanisms, such as the Vetting Agent model, OVC ensures a caller's identity and number rights are validated at the source. OVC also adapts governance concepts from regulated sectors, such as financial services identity frameworks, to bring structured, cross-border trust to voice calls.

Meanwhile, GSMA Foundry is working with Telefónica Tech, TMT ID and Dock Labs on privacy-preserving call centre authentication proof-of-concepts. The goal is to build a trust architecture into high-risk operational environments, reducing impersonation, social engineering, and identity fraud at key consumer touchpoints.



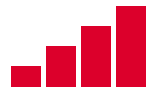
Foundry demonstrations at Mobile World Congress Barcelona 2025, MWC Shanghai and M360 Eurasia 2026s

In parallel, GSMA Foundry is driving network-native scam prevention through the Scams Bot Detection programme, shifting the industry from reactive blocking to proactive, infrastructure-level defence. Working with Virginia Tech and mobile operators, the project detects SIM farms, bot networks, and automated fraud operations, directly within 4G and 5G signalling data. It uses protocol-level analytics, KPIs, and machine learning to identify abnormal behaviour in near real time before scams reach consumers. As it expands using anonymised multi-operator datasets, this initiative is strengthening collective network resilience, protecting operators' revenue and reputations, and materially improving consumer safety.

Together, these Foundry programmes form an integrated anti-scam architecture built on verifiable digital identity, cryptographic trust, and network-level intelligence, restoring confidence in global communications.

Learn more





Key priorities for 2026

In 2026, the GSMA Foundry will strengthen its position as the home of mobile innovation by deepening three key strategic partnerships, expanding project delivery, and launching new challenges and funding opportunities across priority technology domains. Building on the strong momentum created through progressing AI and NTN, the Foundry will place a greater emphasis on quantum technologies - broadening its scope from postquantum security into quantum networking, sensing and compute.

Another major milestone for the year will be the establishment of a vertical innovation centre, closely integrated with the GSMA LabLink information management system, to unite and accelerate collaboration across telco-focused labs globally.

Alongside this, the Foundry will work through the GSMA's Connected Industries team to advance innovation across key sectors, while expanding collaboration with research institutions, academia, and the investment and funding community. Together, these priorities will create a more connected and capable innovation ecosystem—uniting operators, partners, and innovators to scale telecom-ready solutions and industry impact.

1. Strategic partnerships

Strategic partnerships sit at the heart of the GSMA Foundry philosophy, underpinning our ability to turn high potential ideas into scalable, real-world impact. By combining industry expertise, technical infrastructure, and shared ambition, strategic partnerships drive the Foundry's mission to deliver global, telecom-ready innovation.

For example, the partnership with the European Space Agency (ESA) has enabled high-potential knowledge sharing projects, while the collaboration with the Barcelona Supercomputing Center has accelerated the development of low resource language LLMs, such as the KazLLM, a commercial 70 billion parameter LLM model. This same collaborative model now underpins

the AI Languages in Africa initiative, pointing to how the right partnerships can unlock entirely new innovation pathways for operators, ecosystems, and underserved communities.

2. Funding opportunities

Funding opportunities and innovation challenges remain a core pillar of the GSMA Foundry's value proposition. Building on the strong delivery and impact of previous multi-million euro satellite-terrestrial projects, the European Space Agency (ESA) and the GSMA remain committed to further supporting industry-led innovation in non-terrestrial networks (NTN) and direct-to-device connectivity. To that end, the ESA is making available a funding pool of up to €100 million for 2026.

At the same time, through its partnership with Mobile World Capital Barcelona, the Foundry supports pilot projects aligned to the UN Sustainable Development Goals, including a €50,000 award to help winning solutions progress from concept to real-world deployment in Barcelona. The Foundry also continues



Foundry demonstrations at Mobile World Congress Barcelona 2025, MWC Shanghai and Foundry demonstrations at M360 Eurasia.



to sponsor the 4YFN Awards, contributing a €20,000 cash prize to recognise and accelerate high-potential startups showcased at MWC Barcelona. In parallel, the Foundry supports GTI-backed funding for innovation challenges, such as the secure federated learning programme, enabling collaborative, privacy-preserving AI research and reinforcing the role of the Foundry as a catalyst for applied, production-ready innovation.

Looking forward, the Foundry will continue to work with partners to identify further funding and challenge opportunities.

3. Expanding access to labs facilities

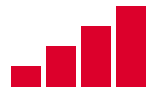
To enable innovators to access scalable lab resources, the Foundry is building a global “labs-as-a-service” platform. Through the Foundry’s strategic relationships, it has access to a range of industry-leading lab facilities, which members can use to foster collaboration and innovation. The Foundry is also creating a global directory of telco labs that drive innovation in telecommunications. The directory will enable labs to showcase their work worldwide and open up new opportunities to collaborate with a wide range of industry players.

4. Forging closer relationships with the investment community

Forging closer relationships with investment and venture funding is an increasing priority for the GSMA Foundry. Building on its growing portfolio of projects and proven delivery track record, the Foundry is strengthening links with investors and venturebuilding programmes to better support the scaling, commercialisation and long-term sustainability of highpotential innovations. By working more closely with investment partners, the Foundry aims to bridge the gap between successful pilots and marketready deployments, enabling solutions to move beyond trials into sustainable businesses. Foundry will work to illustrate how deeper collaboration between operators, startups, corporates and investors can unlock greater impact, accelerate venture creation, and enable meaningful cross-industry innovation at scale.



Foundry demonstrations at Mobile World Congress Barcelona 2025.



Why you should get involved

The GSMA Foundry helps with strategy, accelerates go-to-market, and unlocks new opportunities. After joining the GSMA Foundry, members will be participating in a dynamic innovation ecosystem where they can collaborate seamlessly with operators, partners and innovators to drive the telecoms industry forward. Foundry members win global recognition by participating in events, an annual awards programme, high-profile digital communications and community discussions.

Through the Foundry, you will have the opportunity to drive rapid innovation, develop transformative solutions, and leave a lasting mark on the mobile industry.

To get involved, please contact foundry@gsma.com.



Foundry demonstrations at Mobile World Congress Barcelona 2025.

05

Driving Innovation Through Collaboration



DELIVERING INNOVATION



05. DRIVING INNOVATION THROUGH COLLABORATION

European Space Agency

The Foundry's partnership with the European Space Agency (ESA) is delivering considerable value through jointly-supported challenges and funding opportunities. In 2025, the progress of satellite-terrestrial projects unlocked millions more euros in funding to accelerate the convergence of non-terrestrial and terrestrial networks (NTN/TN).

"We want this partnership with ESA to help unlock the huge benefits satellite and terrestrial telecommunications networks can bring for businesses and consumers, by ensuring they're closer connected. By working together, we can help the communications industry bring innovative solutions to market, which in turn will create tremendous benefits to society. We look forward to launching new opportunities for the market, throughout the year, that can help drive forward the market and innovation." - Alex Sinclair, Chief Technology Officer at the GSMA.



Alex Sinclair, CTO, GSMA and Laurent Jaffart, ESA - Director of Resilience, Navigation and Connectivity / Head of ECSAT, sign MOU at World Space Business Week, Paris, September 2025.

Learn more



ESA announce access to **100m €** in 2026
 ↑ ↑ to GSMA industry challenges.



NTN Community established



53+

Members





Barcelona Supercomputing Center

The Barcelona Supercomputing Center (BSC) AI Factory is one of seven pioneering AI factories established by the European Commission as part of a €200 million initiative to democratise access to advanced AI infrastructure across Europe.

As outlined above, BSC supported VEON subsidiary Qazcode in developing a 70 billion parameter large language model (LLM) in the Kazakh language. In just nine months, KazLLM was launched and has been deployed in AI tutor context. Qazcode is now supporting the scaling of AI models across the VEON footprint following an announcement at MWC Doha with MeetKAI.

Through the partnership with BSC, the Foundry is now enabling access to high performance computing (HPC) and technical support via the EuroHPC consortium, and members can apply for support from BSC. In 2026, the Foundry will be working with BSC and spin-off Qilimanjaro on quantum technologies, offering the first multi-modal Quantum computer as its facilities across Europe.



Foundry Team visit Barcelona Supercomputing center.

Learn more



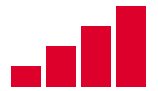
BSC AI Factory



€200m

initiative to democratise access to **AI infrastructure** across Europe





IBM

To further democratise access to AI, GSMA Foundry continues to offer the IBM WatsonX platform to members. Azercell, SLTMobitel, KPN and other members have benefited from the platform.

Facilitated by the GSMA Foundry, Azercell partnered with IBM to create a proof-of-concept generative AI-based assistant that helps network engineers to interact with a wide variety of reports and collect drive test information, instantly explore network quality and gain insights into the potential root causes of deviations in KPIs.

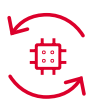
The work with the Foundry and IBM has shown Azercell a path to accelerated data-driven decision-making for network operations and optimisation and has established a foundation for applying generative AI to other strategic areas, including predictive maintenance and smart allocation of capital expenditure.

Meanwhile, GSMA Foundry and IBM have launched the Gen AI Accelerator Pack to enable mobile operators to test and implement AI-driven solutions with minimal risk. SLTMobitel employed the AI Accelerator Pack to develop Aisle AI, an enterprise knowledge hub powered by generative AI and large language models. The operator’s call centre agents can now instantly interact with the knowledge base, vendor documentation, and more-enabling faster, more accurate responses. Customers’ waiting times

have fallen by 20%, while higher quality responses have reduced the number of repeat calls ultimately enhancing both efficiency and customer satisfaction.

IBM has further expanded its AI proposition with the launch of WatsonX 2.0 which is available to GSMA members through the Foundry partnership. In 2026, the partnership with IBM will expand to cover collaboration on quantum technologies, including computing, networking and sensing, building on the GSMA’s work in post-quantum cryptography. Members will have access to exclusive IBM-quantum resources through the IBM x Foundry Quantum Challenge.

Quantum technologies have huge potential. To resolve certain specialised problems, such as a specific random circuit sampling task, a quantum computer could take minutes, whereas a classical supercomputer could take millennia.



Gen AI Accelerator Pack

Adoption rates



49 registrations
↑ ↑

7 Active participants



Azercell, Ethotiel, Globe, KPN, Ooredoo, stc and SLTMobitel.





GTI

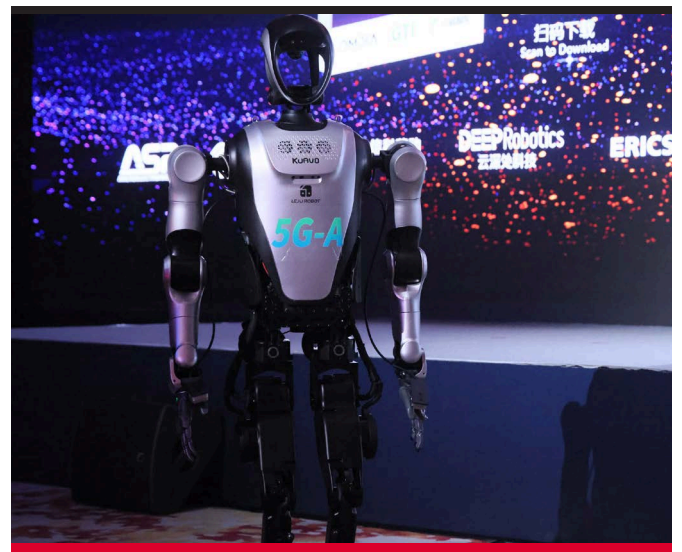
In 2025, the GSMA Foundry and the GTI 5G-A×AI Development Programme continued their collaboration. The partners' New Calling x AI Challenge, which showcases how AI can augment and enhance new calling functionality, attracted 98 submissions from 74 organisations, including 16 universities and 52 enterprises worldwide.

Winners were announced at MWC Shanghai in June 2025, with first prizes awarded to:

- Ant Group Digital Technology Service Maestro, which enables AI to use natural language during a call to drive dialogue, service and payment.
- stc Bank Saudi Arabia's intelligent customer service, which combines new calling and video with AI recognition of voiceprint and keywords to enable access to personal banks accounts via voice recognition.
- China Mobile Jiangsu Branch, which has demonstrated how AI can support the public service issuance of certificates and tax refunds, a tourism-focused immersive experience and multi-agency coordinated emergency responses.

The GSMA also supported GTI's AI secure federated learning initiative by amplifying the opportunity to European and Middle Eastern universities. After a competitive process GTI awarded the multi-year research and development programme contract to Universisty Malaysia.

The GSMA believes that federated learning has the potential to address privacy and scalability issues when training large language models (LLMs) on data sets, particularly when handling sensitive or distributed data, such as medical records or smart-city sensor data.



Learn more



06



New partnerships in 2025





06. NEW PARTNERSHIPS IN 2025

Khalifa University

At the inaugural MWC Doha, GSMA Foundry and Khalifa University of Science and Technology announced a strategic cooperation agreement to advance AI for the telecommunications industry. This **collaboration** unites Khalifa University's 6G Research Center infrastructure and research capabilities with GSMA Foundry's industry leadership to develop specialised AI data assets, models, and benchmarking frameworks tailored specifically for telecom applications.

The partnership's first phase will deliver critical open telco assets, including TelecomGPT—an advanced, telco-first large language model with a chat interface hosted on LightOn—and an **Open Telco Knowledge Graph** focused on 3GPP documentation, built using LightOn compute and hosted on **Hugging Face**. These innovations directly address the performance gaps identified in the **GSMA Open-Telco LLM Benchmarks**, which show that general-purpose AI models struggle with telecom-specific tasks, such as interpreting industry standards, network troubleshooting, and handling technical telecommunications knowledge.

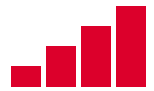
By combining academic excellence with industry expertise, this collaboration aims to accelerate the adoption of robust, safe, and energy-efficient AI solutions that will support critical operational areas, ultimately positioning the MENA region at the forefront of telecoms AI innovation.



Khalifa University Campus

Learn more





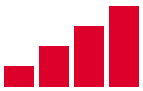
Circuit de Barcelona-Catalunya

In 2025, the GSMA announced a three-year partnership with Fira Circuit (a new company managed by Fira de Barcelona that is responsible for activities at Circuit de Barcelona-Catalunya) and Mobile World Capital Barcelona, a foundation driving digital innovation. Managed by GSMA Foundry, the partnership will showcase cutting-edge technologies including connected and autonomous vehicles, drones, and immersive entertainment experiences.

During MWC 2026, the partnership will showcase CircuitX, a **collaborative platform** to accelerate mobile technology adoption in motorsport and elevate fan experiences. Innovations will be demonstrated both at MWC and in real-world conditions at the Circuit de Barcelona-Catalunya, with further activations planned for motorsport, e-sports, and music events throughout 2026.

Learn more





Strategic Relationships

4YFN

Supported by GSMA Foundry, 4YFN hosts a prestigious global competition aimed at identifying and celebrating the world's most innovative digital startups. This competition serves as the pinnacle of recognition for startups at MWC Barcelona, ensuring international exposure.

By collaborating with the 4YFN ecosystem, the Foundry provides startups with access to valuable resources, mentorship, and funding opportunities. For the second consecutive year, the GSMA Foundry sponsored the 4YFN Awards at MWC Barcelona 2025, offering a €20,000 cash prize to the winner. Following an electrifying on-stage pitching competition, the prestigious award was won by Bankuish, a fintech startup transforming credit access for gig workers by challenging traditional banking models with a more inclusive financial evaluation.

The other 4YFN 25 finalists were:

- Horus ML, which has developed a low-cost cardiovascular screening system that uses AI to rapidly analyse retinal images in primary care settings.
- Qflow, which is cutting costs and reducing waste on construction sites by providing contractors with a digital data trail.
- Ramon.Space, which is building state-of-the-art space-resilient computing infrastructure to empower the next generation of satellite and space missions.
- Rockfish Data, which is helping enterprises to desensitise real-world data and to train AI models.
- At MWC26 Barcelona, the winner of the 4YFN 2026 Awards will be selected from five finalists on Wednesday 5 March.



4YFN Awards 2025

Learn more





Mobile World Capital

The Foundry's partnership with Mobile World Capital centres on the Mobile World Capital Sustainable Technology Awards in collaboration with B Lab Spain, an initiative that champions technological innovation for a sustainable future. The partners share a mission to drive impactful solutions that tackle issues, such as climate change, digital inclusion, and inequality.

In 2025, the inaugural awards attracted 157 projects from 34 countries. Projects across five categories were recognised, with one project receiving €50,000 prize money and the opportunity to scale in Barcelona. The 2026 edition is currently open for applications, with the submission deadline on 18 March 2026. The winners will be announced at an Awards Gala taking place in Barcelona in June 2026.

For the GSMA Foundry, this partnership represents an opportunity to amplify the power of mobile solutions to create a positive, lasting impact. Technology, when harnessed responsibly, is a powerful enabler of equity and resilience, paving the way for a sustainable digital future. Together, with Mobile World Capital Barcelona, the Foundry is aiming to catalyse change, fostering a world where innovation drives progress for all.

Learn more



Awards

Sustainable Technology Awards



157

projects
from

34

countries





The International Artificial Intelligence Industry Alliance (AIIA)

GSMA Foundry's partnership with the AIIA is focused on knowledge sharing and collaboration on AI, exemplified in the publication of the *Operator Best Practices: AI Large Model Empowering Verticals Use Cases report*. AIIA will also make several labs available for GSMA members to use for projects, pilots and proofs of concepts and launch challenges for AI in agentic and industry verticals.



Learn more



07

Showcasing projects

SHOWCASING PROJECTS

SHOWCASING PROJECTS

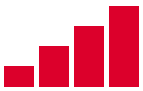
SHOWCASING PROJECTS

SHOWCASING PROJECTS

SHOWCASING PROJECTS

SHOWCASING PROJECTS





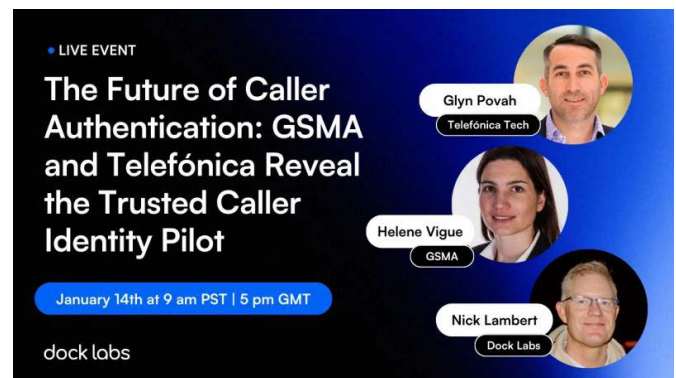
07. SHOWCASING PROJECTS

Trusted Caller Identity

To reduce fraud and improve trust, the Trusted Caller Identity project has developed a proof of concept (PoC) that uses cryptographically-secure verifiable credentials to authenticate callers. The PoC is designed to instantly and seamlessly verify a caller's identity for relying parties, such as banks, replacing error-prone knowledge-based authentication with privacy-preserving, digitally-signed credentials, benefiting consumers, businesses and mobile operators.

The Trusted Caller Identity solution could enable mobile operators to become global providers of secure identity linked to phone numbers, fostering new ecosystems and revenue streams through CAMARA-based APIs. Key tasks for the project partners - Telefonica, Dock Labs, SoW, TMT, and the GSMA – include setting up an ecosystem, developing mobile wallet messaging capabilities, implementing call centre integration, credential issuance and revocation.

Learn more



Trusted Caller Identity Webinar: GSMA Foundry and partners



Stopping Scams at the Source

Scams and spam are among the fastest-growing threats to consumer confidence in mobile services. Fraudsters use SIM farms (large clusters of SIM cards controlled by automated systems) to create fake accounts, send mass messages or calls, and bypass legitimate telecom services, fuelling phishing and impersonation.

Virginia Tech, in collaboration with GSMA Foundry, is leading a project to detect SIM farm activity directly from 4G/5G network signalling. By analysing protocol-level data and key performance indicators, the solution identifies abnormal patterns in real time, stopping scams before they reach consumers. The goal is to move from reactive mitigation to infrastructure-level prevention, delivering safer mobile experiences worldwide.

For consumers, the project should reduce scam calls/texts and build greater confidence in mobile services, while helping operators protect network integrity and revenue. The partners are planning to trial the solution with a North American mobile operator in 2026.



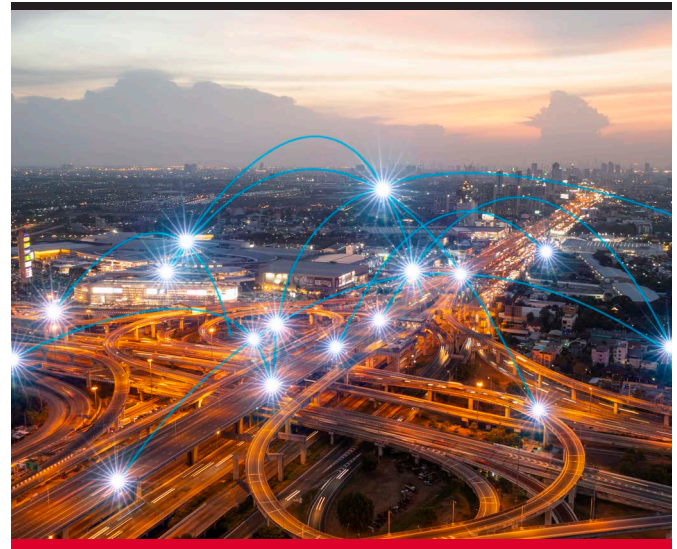


Extending NTN Connectivity

There is growing demand for direct-to-device (D2D) services that enable handsets and other equipment to connect directly to satellites when there is no terrestrial coverage. As vehicles become increasingly dependent on connectivity for critical safety features, D2D service provider Skylo is integrating standards-based satellite connectivity with existing automotive hardware.

The goal is to provide vehicles and their drivers with seamless coverage and essential services, such as emergency SOS, navigation, and telematics. By helping to make always-on safety and data services standard in vehicles, the project promises to enhance driver protection and satisfaction, while accelerating industry adoption of satellite connectivity.

Skylo is also enabling D2D satellite connectivity for wearable devices, such as smart watches, providing real-time messaging and emergency SOS services independent of smartphones. The goal is to ensure that wearable devices retain connectivity and safety functionality when being worn for outdoor activities in areas with no terrestrial cellular coverage. The project promises to make satellite communication a mainstream feature in wearables, democratising personal safety and connectivity for millions of users worldwide.





5G-Advanced Intelligent Packet Core

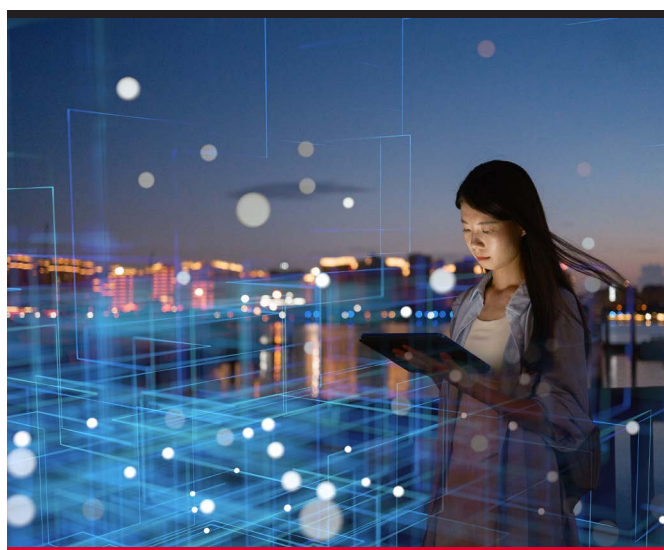
The Intelligent Packet Core Foundry Project led by Huawei aims to demonstrate the capabilities and benefits of 5G intelligent packet core solutions, which can enable efficient network and service optimisation. It is showcasing how AI can enable real-time end-user experience assurance and dynamic optimisation, facilitating monetisable differentiated services, such as adaptive QoS for video, gaming, and multi-device home access.

A model is used to accurately evaluate user experience in real-time, based on the data service rate, packet length, packet loss rate and other information. Based on this assessment, dynamic optimisation is performed on-demand, and resources are allocated to users as required. In cases where the user experience is guaranteed, the network displays the service assurance logo on their device. In this way, the user can clearly see the service effect and mobile operators can close the experience monetisation loop.

The project includes the publication of **case studies**, a **whitepaper**, and a GSMA-led webinar to promote wider adoption and industry impact. Initially **deployed** mainly

in China and the Middle East, the intelligent packet core solutions are targeted at the business, consumer and student markets, and could potentially benefit up to 750 million users in China. In future, Huawei plans to build a unified experience operation portal and help telcos build intelligent and personalised experience networks.

Learn more





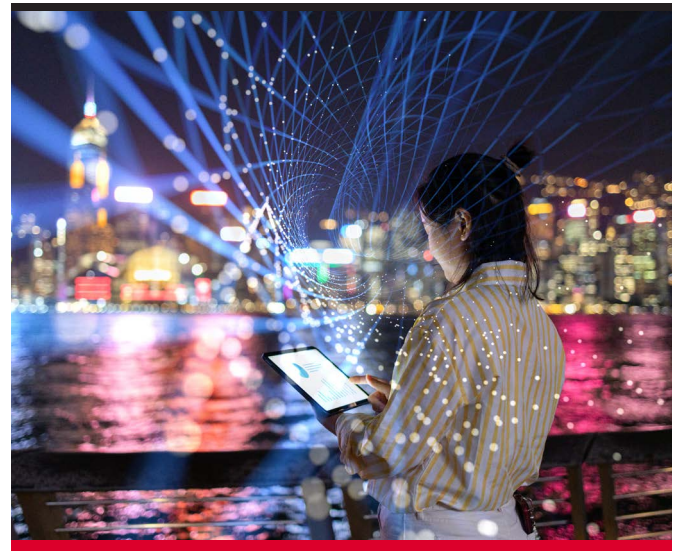
Mobile Network for Thriving AI

Artificial intelligence (AI) is creating transformative opportunities for the mobile industry. But mobile networks must evolve to realise this potential. Led by Huawei, the **Mobile Network for Thriving AI project** provides a blueprint for mobile operators to build the intelligent, high-performing networks required to accelerate the mass adoption of AI applications across consumer, home, and business environments.

Huawei is working with GSMA Foundry and leading operators to identify the key network requirements needed to deliver intelligent, connected services. For example, China Telecom has created a seamless **5G-Advanced (5G-A) x AI network** to serve tourists cruising on Shanghai's Huangpu River. The network, which provides peak downlink speeds of 3.1 Gbps and uplink speeds of 260 Mbps on cruise ships, underpins the Personal AI Tour Guide and generates significant new revenue for the cruise operator Jiushi Group.

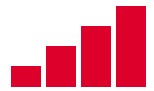
Meanwhile, in Saudi Arabia, Zain KSA **has deployed** a FDD 600MHz low-frequency NR network, boosting network coverage by up to 30dB and uplink capacity 10 fold, and reducing latency by 50%. The network enables end-users to access AI-driven services, including the Personal AI Tour Guide, via Rokid smart glasses.

China Mobile Zhejiang has employed 5G-Advanced and AI to build a **smart cultural tourism system** in Hangzhou. The system, which strengthened uplink performance using F/A SUL 5G-A, enables AI agents and smart glasses. Visitors benefit from multilingual guides, food recommendations, and smooth livestreaming with uplink speeds exceeding 1 Gbps. The system is now scaling across Zhejiang.



[Learn more](#)





Coordinating Agentic AI for Autonomous Networks

China Mobile and ZTE have developed a new “Digital Employee” to accelerate the move toward fully autonomous telecom networks. The **solution** acts as a central AI coordinator, managing multiple specialist agents to diagnose network faults, prioritise work orders, and optimise performance across multi-vendor, cross-domain environments.

In live trials across multiple Chinese provinces, the system achieved over 90% root-cause identification accuracy, reduced the mean time to diagnose faults from 15 minutes to around three minutes, lowered overall mean time to recovery by up to 11%, and cut on-site maintenance visits by 5%. In large-scale pilots covering tens of thousands of network elements, it also improved service continuity during severe weather events and reached automation rates as high as 95% for continuous upgrade and deployment processes. ZTE, which expects the system to be deployed nationwide across China by 2027, believes it has clear potential for adoption in global telecom markets and other industries requiring self-healing, AI-driven operations.

Learn more





Faster Troubleshooting for Transport Networks

As 5G adoption accelerates, transport networks are generating millions of alarms each week, placing significant pressure on telecom operations teams. To address this challenge, China Mobile Zhejiang, working with ZTE, has deployed an AI-driven **automated troubleshooting solution** that combines large language models (LLMs), small AI models, and a digital twin of the transport network. The solution replaces rule-based alarm handling with intelligent correlation, root-cause analysis, and closed-loop fault resolution.

The system automatically filters and clusters alarms, identifies root causes with over 90% accuracy, and optimises the entire fault management workflow, from identification and diagnosis to repair. Configuration-related faults can be resolved fully automatically via simulations in the digital twin, while device-related faults are supported with real-time repair guidance delivered to field engineers through a mobile app, eliminating delays caused by manual coordination. ZTE regards the solution's integrated "algorithm-platform-process" design as a reusable framework that can be replicated across operators, network domains, and even other industries undergoing digital transformation.

Learn more



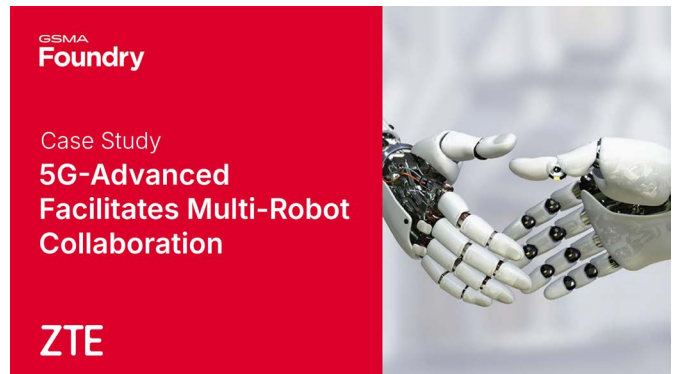


5G-Advanced Facilitates Multi-Robot Collaboration

China Telecom, ZTE, DroidUp and AgiBot have jointly developed EasyOn·Robot, a next-generation private **5G-Advanced solution** to support physical AI and multi-robot automation. Robots working in environments, such as factories, warehouses, hotels, ports and retail stores, require continuous, high-bandwidth, low-latency connectivity to train advanced AI models, coordinate with other robots, and operate safely and efficiently.

The EasyOn·Robot solution delivers ultra-high throughput (up to 2 Gbps uplink), sub-10 ms latency, and 99.99% reliability, enabling real-time sensor streaming, high-precision positioning and seamless multi-robot collaboration. Designed for simplified deployment, EasyOn·Robot removes the need for a traditional core network, instead using ZTE's NodeEngine edge computing board for essential 5G functions. Each robot receives a guaranteed 200 Mbps uplink, supporting continuous high-resolution data capture.

The partners have demonstrated how the solution can support collaboration between multiple robots in entertainment scenarios and underpin an unmanned convenience store, managing entry, personalised recommendations, autonomous checkout, and product delivery.





Relieving the Pressure on Physicians

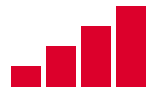
Hospitals are struggling to keep up with rising demand for comprehensive health checks. To ease the pressure on senior physicians and improve report quality, ZTE and partners developed an AI-powered **Intelligent Physical Examination Solution**. Using a medical large language model and a secure 5G-enabled infrastructure, the system automatically generates complete, easy-to-understand medical reports within minutes.

Early results at Shanghai Tenth People's Hospital show a tenfold increase in daily report output and a 70% reduction in manual workload. Patients receive clearer guidance, while remote review capabilities extend advanced medical support to rural areas. ZTE says the solution will scale across China in 2026, with further expansion into specialised medical fields planned.



Learn more





Circular Networks, Equipment Identifier

Across the mobile industry, operators decommission or modernise hundreds of thousands of base station sites every year. Most of the equipment is discarded, even though it has technical potential. A Telia-Accenture study estimated that embedding circularity in telecom operations could generate US\$20–30 billion in value through infrastructure resale, waste reduction, and smarter installations.

To help realise this opportunity, NetLife™ and Safaricom, Kenya's leading operator, are **working together** to demonstrate how GRiD, a universal equipment identifier, can enable large-scale reuse and refurbishment of telecom network assets. The pilot tested the use of GRiD to match parts for equivalence, circular compatibility, and emissions modelling. The pilot with Safaricom has demonstrated how the use of GRiD grouping means 62% fewer SKUs (stock keeping units) are needed, according to NetLife, potentially transforming spare parts management. The partners also found that reusing GRiD-matched equivalents reduced costs by 55%, and CO2 emissions by 60%.



NetLife team at MWC Doha 25



5G NTN Asset Tracking

The integration of 5G and satellite technologies is transforming asset tracking, offering unprecedented global coverage, reliability, and cost-effectiveness. Bewhere, a provider of low-power 5G IoT wide-area tracking technology, and the GSMA Foundry analysed how advanced tracking solutions are transforming supply chain operations.

The resulting **white paper** explores how the core benefits of asset tracking are enhanced by the increased coverage and connection reliability offered by integrated 5G and satellite solutions. These benefits include real-time location and status monitoring of assets, improved operational efficiency, reduced asset loss, enhanced maintenance scheduling, improved inventory management, and simplified compliance with regulations.

As things stand, mid-range commercial satellite IoT tracking devices and their associated annual network connectivity fees represent a significant investment for businesses. However, the industry anticipates that future integrated 5G and satellite solutions should reduce these costs. This is likely to make integrated tracking solutions more accessible to a broader range of businesses, enabling wider adoption and scalability of asset tracking technologies across various industries.



[Learn more](#)





NextWorks

The NextWorks project, delivered under the ESA–GSMA Foundry partnership, demonstrated how innovative 5G and satellite technologies can be combined to unlock new capabilities for IoT. The project deployed an IoT sensor within a secure private 5G bubble, leveraging CAMARA-based Quality on Demand (QoD) APIs to dynamically route traffic over either terrestrial (TN) or non-terrestrial (NTN) backhaul.

This flexible architecture showcased how operators can guarantee performance for mission-critical IoT applications while seamlessly switching between network domains. As one of the first ESA-funded projects to reach completion, the Nextworks initiative provides a strong proof point for how mission-critical Foundry-supported challenges and funding opportunities can accelerate market-ready solutions across the NTN/TN ecosystem.



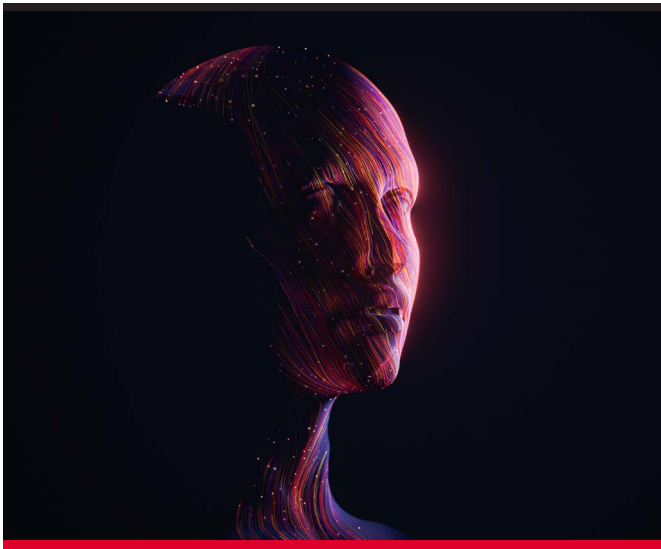


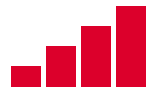
Agentic AI

Working with a group of leading mobile operators, the GSMA Foundry published the *Agentic AI for Telecom: Charting the Course for an Intelligent Future* **white paper**, which outlines how agentic AI creates significant opportunities for telcos to unlock new value, elevate customer experiences, and improve operational performance.

The paper provides strategic insight into the technologies, challenges, and implementation considerations, while emphasising the need for industry-wide collaboration and standardised frameworks to enable innovation and a cohesive, interoperable Agentic AI ecosystem. The research includes contributions from China Mobile, China Unicom, KT, LG U+, NTT DOCOMO, TIM and Turkcell.

Learn more



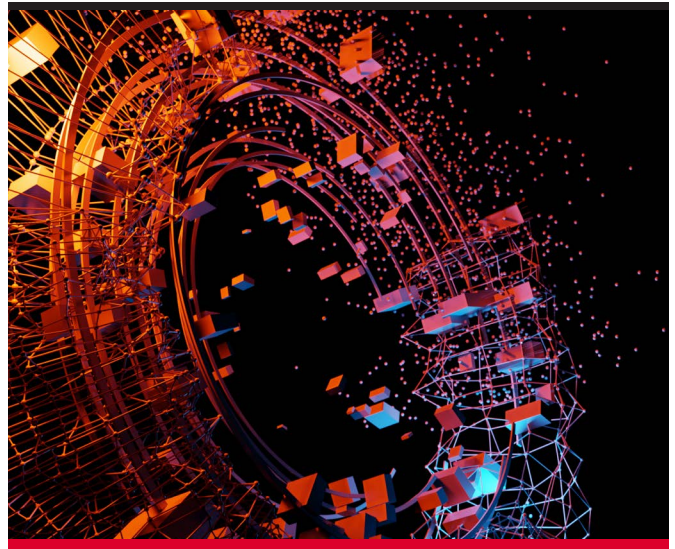


Africa AI Languages

The Africa AI Languages initiative aims to close the persistent language gap in generative AI by enabling the development of high-quality models for Africa's diverse low resource languages. Building on the Foundry's earlier success with KazLLM—developed in collaboration with BSC and Qazcode—this initiative brings together mobile operators, research institutions, and technology partners to create culturally relevant datasets, benchmark performance, and codevelop telco ready language models.

By combining industry need, academic expertise, and access to advanced compute, the project is designed to scale from early pilots into country-level and ultimately regional deployments. At MWC Barcelona 2026, the project plans to launch the first four African language LLMs, including Zulu, Swahili, Khosa and pan-Africa dialect models.

The initiative represents a powerful example of how the Foundry can turn early stage ideas into impactful cross-ecosystem programmes that strengthen digital inclusion and unlock new AI driven opportunities across the continent.



[Learn more](#)



08



Spotlight on 2025's Foundry Award Winners announced in 2026





08. SPOTLIGHT ON FOUNDRY AWARD WINNERS 2025

2026 Challenge Winners / Partner Awards

GTI Challenge 2026

8 x New Calling x AI
Secure fed learning

ESA challenge winners 2024 + 2025

Direct-to-Device Connectivity:
OQ Technology & Celeste

Delivering seamless satellite-to-device communication, extending coverage beyond traditional terrestrial limits.

5G/6G Hubs:
Lasting software

Accelerating innovation hubs that bridge research, deployment and scalable transformation.

Fixed Mobile Convergence for TN-NTN
Networks:
AWTG

Integrating terrestrial and non-terrestrial networks into unified service architectures.

6G Innovation:
Keysight / Sateliot

Enabling next-generation testing and validation for emerging 6G and satellite-enabled ecosystems.

NTN x Open Gateway Challenge:
NextWorks

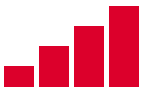
Driving open, programmable NTN capabilities aligned with global interoperability standards.



Richard Cockle, Head of GSMA Foundry and Connected Communities presents last year's awards.

[Learn more](#)





Recap of 2025 Foundry Awards

GSMA Foundry Excellence Awards

Presented at MWC25 Barcelona, the GSMA Foundry Excellence Awards recognise the most innovative and significant projects and initiatives in the GSMA Foundry.

In 2025, winners included VEON, and partners Beeline Kazakhstan and Qazcode, for their work on developing AI models for low-resource languages addressing the AI language gap and Huawei, alongside partners AIS, China Mobile, e&, Globe, stc, Sunrise and Zain KSA, for a new intelligent packet core to help operators monetise 5G networks.

ZTE and China Mobile were honoured for the end-to-end automation of network operations, and Sateliot for developing a low-cost solution for connecting IoT devices to satellites. CloudRAN.ai won the Outstanding Industry Vertical Use Case award for developing a solution that can provide reliable coverage to fast moving devices and vehicles in sports arenas. See the projects section of [last year's report](#) for further details.

The GSMA Foundry helps with strategy, accelerates go-to-market, and unlocks new opportunities. After joining the GSMA Foundry, members will participate in a dynamic innovation ecosystem where they can collaborate seamlessly with operators, partners, and innovators to drive the telecoms industry forward. Foundry members win global recognition by participating in events, an annual awards programme, high-profile digital communications and community discussions. Through the Foundry, you will have the opportunity to drive rapid innovation, revolutionise industries, and leave a lasting mark on the mobile industry.

Get Involved: contact us foundry@gsma.com

2025 Foundry Excellence Awards winners

5G Monetisation Award

AIS, China Mobile, e&, Globe, Huawei, stc, Sunrise and Zain KSA - new intelligent packet core helping operators monetise 5G networks

Non-Terrestrial Networks (NTN) Award

Sateliot - Expanding the Internet of Things Everywhere

Artificial Intelligence Award

VEON with Beeline Kazakhstan and Qazcode Kaz LLM

Addressing the AI Language Gap Network Efficiency and Optimisation Award -

China Mobile and ZTE - End-to-End Automation of Networks Operations

Outstanding Industry Vertical Award

CloudRAN.ai - Delivering Robust Connectivity at Major Events



Foundry Innovation Awards 2025 at MWC Barcelona.



Mobile World Capital Awards

Mobile World Capital Barcelona, GSMA Foundry, B Lab Spain, and the Ministry for Digital Transformation and Public Service have launched international awards to recognise the best innovative projects in responsible digital transition that contribute to the United Nations 2030 Agenda Sustainable Development Goals (SDGs), while creating a positive impact on society.

Following the success of the first edition, which attracted 157 projects from 34 countries, the 2026 call aims to promote and give visibility to the best international innovations that use technology to tackle major social and environmental challenges through digital transformation. These are projects that unleash the full potential of AI, big data, blockchain, or smart sensors for the common good, harnessing advanced technologies to address urgent global issues, such as inequality, climate change, access to healthcare, urban management, or digital inclusion.



[Learn more](#)



09

GSMA Connected Communities





09. GSMA CONNECTED COMMUNITIES

Supported by the Foundry, **GSMA Connected Communities** organise industry-focused forums that unite members and key stakeholders to address shared goals and challenges across specific sectors.

By fostering collaboration and facilitating innovative problem-solving, these communities provide a robust network to forge transformative partnerships and accelerate innovation pipelines.

The Smart Mobility Community



focuses on how mobile operators can leverage their services and capabilities to enhance transportation systems, primarily in the aviation and automotive sectors. Stakeholders can share expertise and collaborate on innovative projects, while gaining insights on opportunities.

The GSMA IoT Community



accelerates IoT growth through industry collaboration, optimised networks, and key enablers, offering resources, news and updates on global events shaping the connected future.

The Identity and Data Community



enables collaboration across the ecosystem, sharing best practices and driving mobile-led identity solutions to support digital transformation and unlock new business opportunities.

The Non-Terrestrial Networks (NTN) Community



unites mobile and satellite technologies, driving collaboration through the GSMA Foundry to integrate satellite communications with 5G and future 6G networks for real-world innovation.

The Manufacturing and Production Community



enables manufacturers, mobile operators, and technology experts to advance smart manufacturing together. Members connect, share expertise, and collaborate on innovative projects while gaining access to a specialised network focused on leading Industry 4.0 initiatives.

The Connected Fintech and Commerce community



is a global initiative designed to drive progress in mobile fintech and commerce. It helps participants explore areas of common interest, share insights and case studies, create opportunities, and drive projects.

The Mobile AI Community



aims to accelerate network-focused AI adoption in mobile, addressing the gap between rapid AI advancement and slower telecom implementation cycles. Global experts collaborate through action-oriented meetings to identify and resolve implementation barriers, focusing on network transformation.



The Private Networks Community



unites operators, vendors, integrators and enterprises to accelerate private 5G adoption through collaboration, knowledge sharing, and problem-solving. The focus is on promoting enterprise benefits, and addressing industry challenges to build secure, reliable, and scalable private networks.

The 6G Community



is focused on shaping the next generation of communication and automation by bringing together global R&D, standardisation, and industry collaboration. Working with leading stakeholders across the ecosystem, the community identifies critical gaps and opportunities in the evolving technology landscape to accelerate progress toward future networks. Its scope spans reference architectures, cloud-native and service-based design, advanced radio and RAN technologies—including ISAC, Massive MIMO, RIS, DAS, and ultra-wideband systems—and spectrum innovation across mid-band, mmWave, and sub-THz frequencies.

In parallel, the 6G community is driving the convergence of AI and intelligent automation with 6G, exploring frontier concepts, such as agentic AI and intent-based networking, as core capabilities of future networks. By championing interoperability, open interfaces, APIs, and multi-vendor collaboration, it promotes an open ecosystem capable of delivering scalable, high-impact solutions for future digital infrastructure.

[Learn more](#)



10

Get
involved

PARTNERING FOR INNOVATION

PARTNERING FOR INNOVATION

PARTNERING FOR INNOVATION

PARTNERING FOR INNOVATION

PARTNERING FOR INNOVATION





10. GET INVOLVED

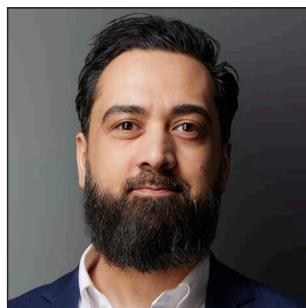
Be part of shaping the future of mobile technology - reach out to explore how you can get involved with GSMA Foundry.

Contact us:

foundry@gsma.com
www.gsma.com/Foundry



Richard Cockle
Head of GSMA Foundry and
Connected Industries



Faisal Zia
Director, Business
Development & Partnerships



Sian Fishwick
Marketing Director,
Technology



Andrew Bell
Technical Director,
Programme Delivery



Ioanna Nikolaou
Senior Marketing
Manager



Jo Windel
Marketing Manager



Jessica Bukenya
Associate Innovation Manager,
Project Management



Hamaad Akbar
Associate Innovation Manager,
Project Management



www.gsma.com/foundry