

## SM-DP and SM-SR

Interrupted download issue

February 2020



# Interrupted Profile Download issue

## Interrupted download : device disconnection or ES3 communication error, after ISD-P creation

### 2 different error cases encountered on the field

- During key-establishment or profile download – profile download is not completed on eUICC: ISD-P is CREATED on SM-SR and eUICC
- ES3.ProfileDownloadCompleted failure – profile download is completed on eUICC: ISD-P is DISABLED ISD-P on eUICC, but CREATED ISD-P on SM-SR

### SGP.02 doesn't explicitly describe how to handle such cases

- When CreateISDP procedure is not completed, SM-SR manages a IN-CREATION state, and is in charge of deleting such ISD-P in the eUICC at any next request
- For error in the remaining part of the procedure:
  - SM-DP is in charge of deleting the CREATED ISD-P in case of interrupted download:
    - During the Key Establishment procedure, but device may be not reachable
    - During the Profile Download and Installation procedure, but device may be not reachable
    - When performing a new profile download on the same eUICC (**not explicitly stated**)
- When SM-SR receives a Profile enable or disable command
  - SM-SR shall check that profile is in DISABLED state, if not shall reject the command
  - Some SM-SR may delete CREATED ISD-P in this case

OPEN

THALES GROUP INTERNAL  
THALES GROUP CONFIDENTIAL  
THALES GROUP SECRET

THALES

# ISD-P state life-cycle

## IN-CREATION

During Create-ISDP procedure

To be deleted by SM-SR

## CREATED

After Create-ISDP procedure, and until completion of profile download

To be deleted by SM-DP

## DISABLED

At completion of profile download

Can be enabled or deleted

## "DELETED"

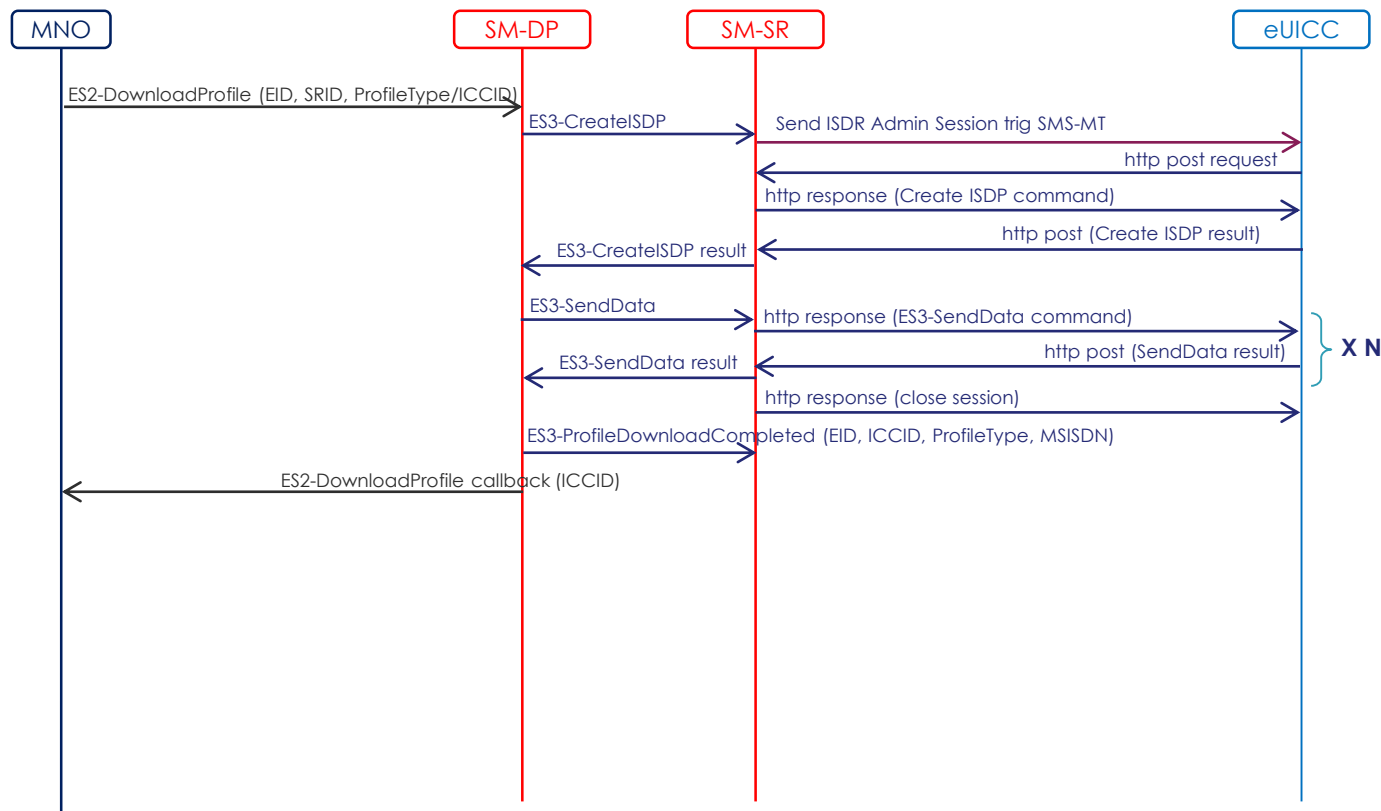
Upon ISD-P deletion by MNO / POL1 or POL2

OPEN

THALES GROUP INTERNAL  
THALES GROUP CONFIDENTIAL  
THALES GROUP SECRET

THALES

# Profile download – Current normal flow

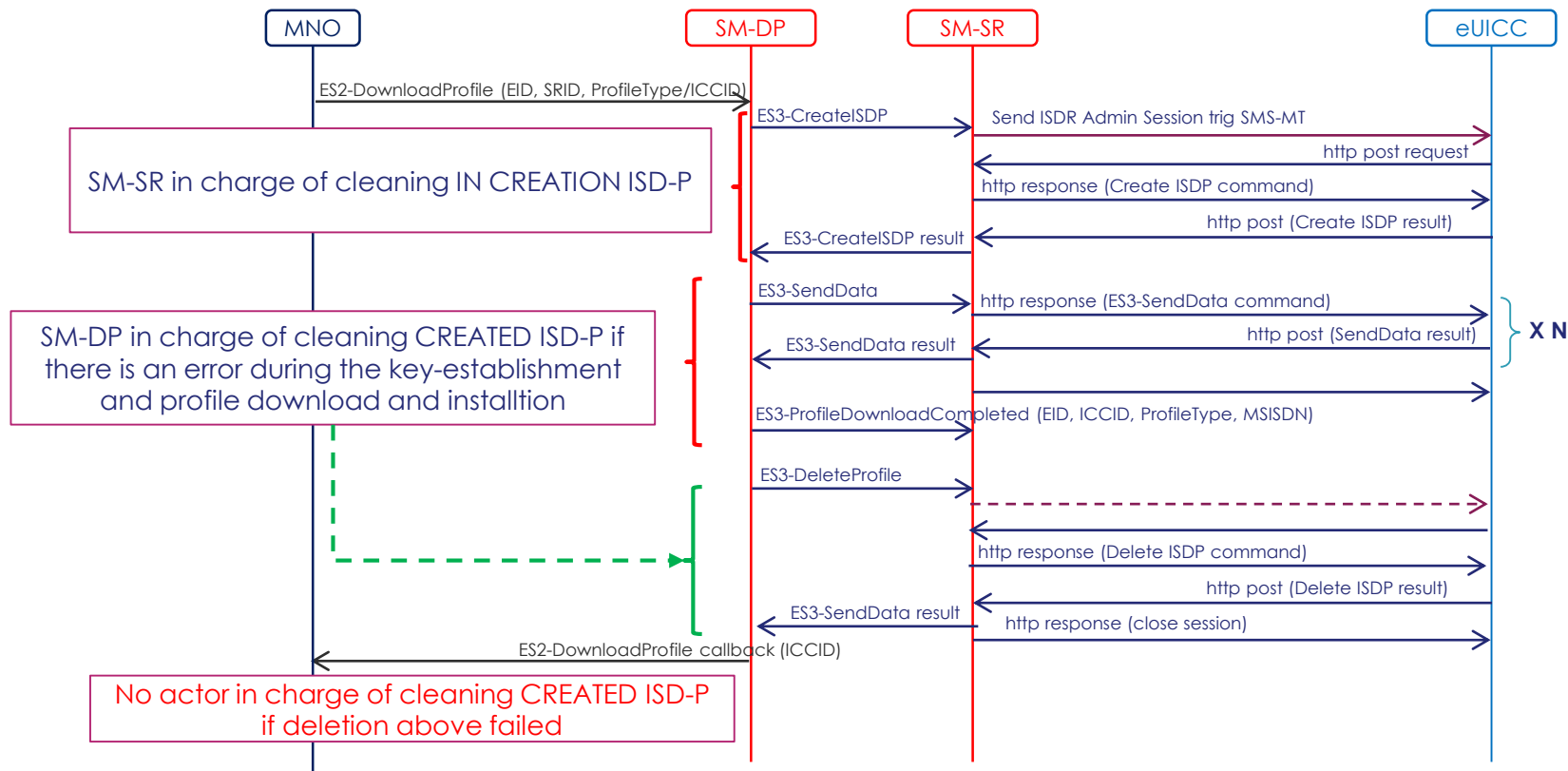


OPEN

THALES GROUP INTERNAL  
THALES GROUP CONFIDENTIAL  
THALES GROUP SECRET

THALES

# Profile download – Current error management flow



# Profile download – Proposed Error flow

This document may not be reproduced, modified, adapted, published, translated, in any way in whole or in part or disclosed to a third party without the prior written consent of Thales © Thales 2018. All rights reserved.

