

# WSO2.Telco Mobile Identity Gateway for Mobile Connect Accelerator (MCX)

GSMA Approved Solution

Digital Enablement Powered by APIs for Telcos

# Introduction - Mobile Connect



Mobile Connect is a **secure universal identity solution**. Simply by matching the user to their mobile phone number, it offers users a wide range of practical uses: from being able to easily register and log in to websites and apps to authorising transactions when online.

**88%** of consumers say a single secure login solution would be beneficial to them

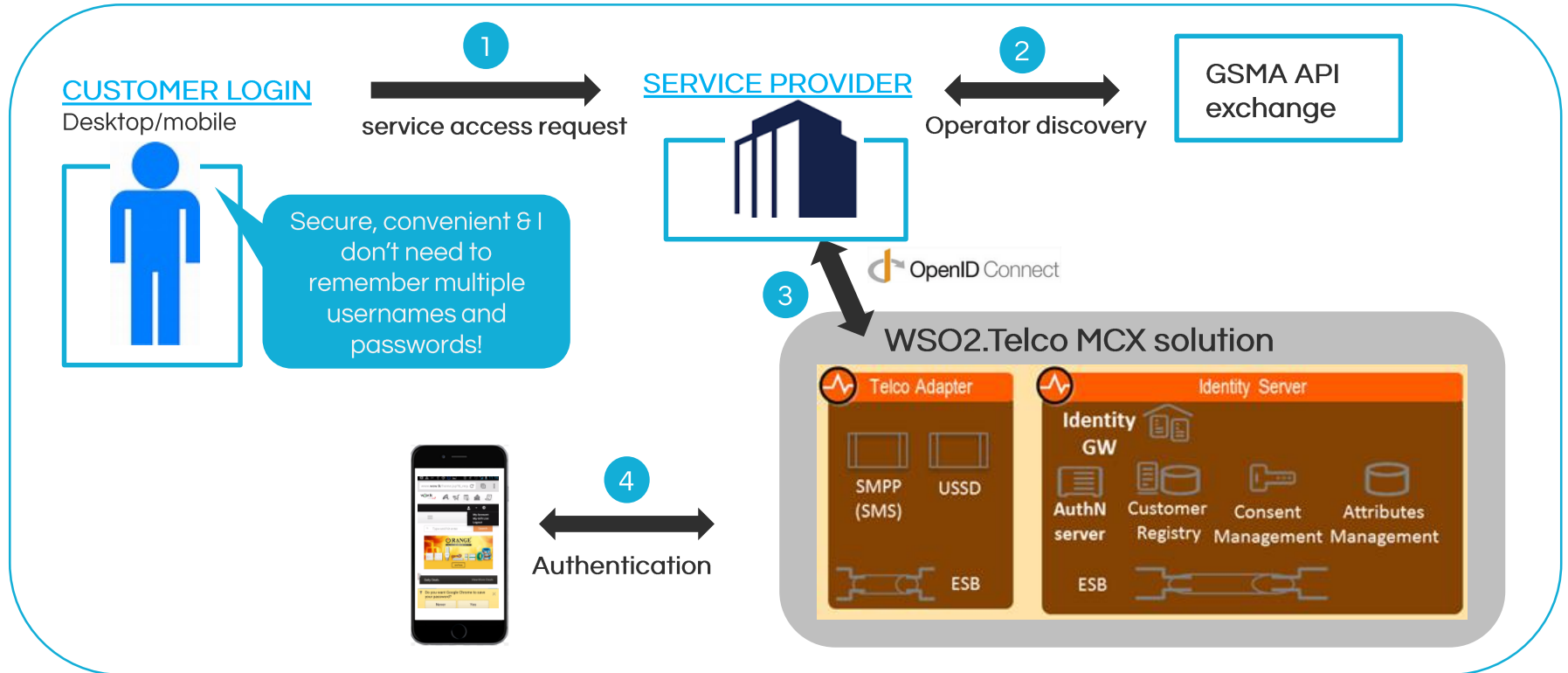
**68%** of users say forgetting passwords is a significant problem

**40%** of users admit to using the forgot password feature once a month

Sources: GSMA Consumer Research 2015, Cyber Streetwise

**WSO2.Telco powers 40% of the 2.5Bn Enabled Mobile Connect users**

# How MCX works

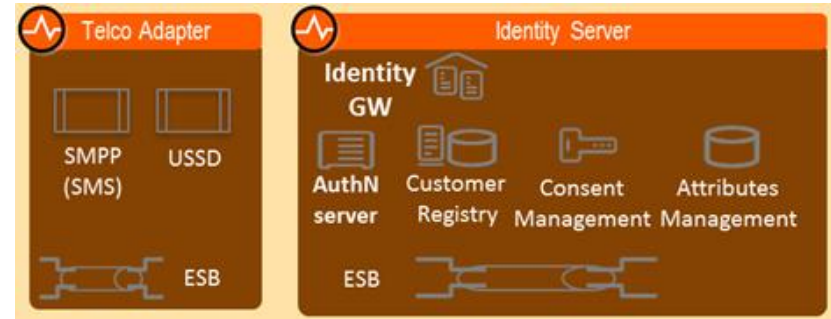


# WSO2.Telco Mobile Identity Gateway

- GSMA Certified MCX Vendor
- Standalone solution delivering full Mobile Connect functionality
  - Authentication
  - Authorization
  - Attribute sharing
- Extendable Authenticator Framework
  - SMS, USSD, HE , SIM, Smartphone (LoA2)
  - USSD, HE , SIM, Smartphone (LoA3)
- WSO2 Integration platform for custom integrations
  - SMPP
  - Webservices
  - ETSI 102.204 for standard compliant MSSP

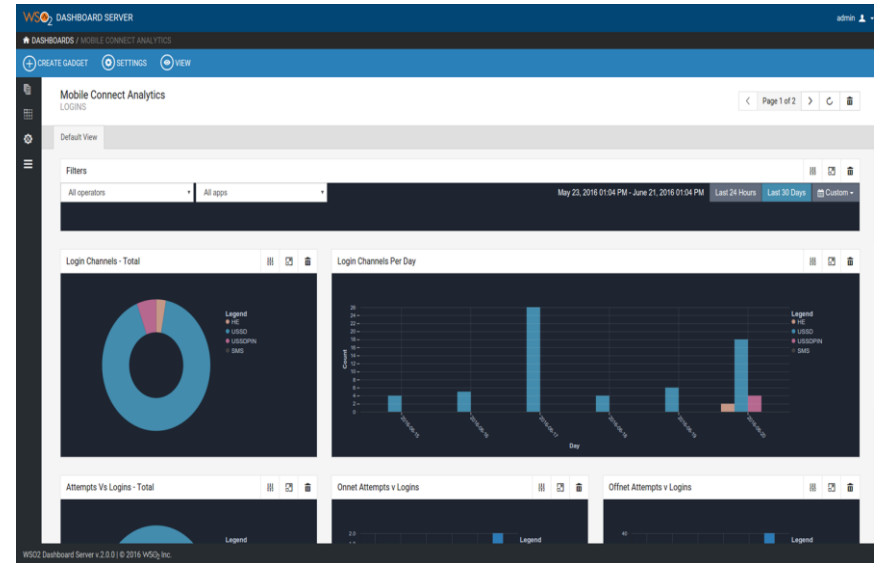


## Mobile Identity Gateway



# Analytics Dashboard & Reporting

- Real-time and batch analytics
- Existing Dashboard widgets
  - Per SP breakdown
    - Logins
    - Registrations
  - Authentication channels
  - Drop-out analysis
- Rapid creation of new dashboard widgets with little or no backend code changes
- Configurable real-time alerts



# Go-Live Options - MCX



## Managed Cloud

- Shared instances
- Cost effective, quick start
- No hardware deployed On-Premise
- SMS, USSD access via VPN to Hub
- SP On-boarding via hub portal or GSMA Developer Portal
- May require VPN connection
- Optional API Management capability and access to other hub SPs
- Connectors on the cloud
- Typical Go-live: 3-4 weeks

## On-Premise

- All data remains On-premise
- SMS, USSD connect integrations can be made direct to MNO subsystem without VPNs.
- SP on boarding via GSMA Developer portal or local gateway
- Ability to run own developer engagement program with optional API Management capability
- Connectors On-premise
- Typical Go-live: 3 months

## Hybrid

- All data remains On-premise
- Limited On-premise hardware footprint
- SP On-boarding via hub portal or GSMA Developer Portal
- May require VPN connection
- Optional API Management capability
- Connectors On-premise
- Typical Go-live: 3 months
- Shared ID Gateway, dedicated databases and connectors instances

# Integration & Support Services

## Customer Systems (Southbound Architecture)

- SMSC
- USSD Gateway
- Header Enrichment

We can provide standards based connectors that can enable rapid integration to MNO network elements. Typically all 3 integrations can be completed within one month.

## Discovery Service

- Support integration to GSMA exchange.

## Service Provider On boarding

- We support upto 2 SPs on-boarding FoC basis
- Additional support can be purchased separately

### Note:

These Integration options are common to all Mobile Connect deployment options and can be reused if the customer migrates between options

# PLEASE CONTACT US

## Our Contact details

- Technical

- Venura Mendis
- [venura@wso2telco.com](mailto:venura@wso2telco.com)
- +94773335827

- Commercial

- Mirantha Perera
- [mirantha@wso2telco.com](mailto:mirantha@wso2telco.com)
- +94777571026

[www.wso2telco.com](http://www.wso2telco.com)

Email: [info@wso2telco.com](mailto:info@wso2telco.com)

Liara Ibrahim

[liara@wso2telco.com](mailto:liara@wso2telco.com)

+94777123392