

Efficient connectivity and security management for Massive IoT

Wednesday 28 February, 2024 9.00 - 11.30
Gran Fira, Barcelona Hall 8, Theatre 4



Jean-Francois GROS

Head of IoT Services Product Line
Thales

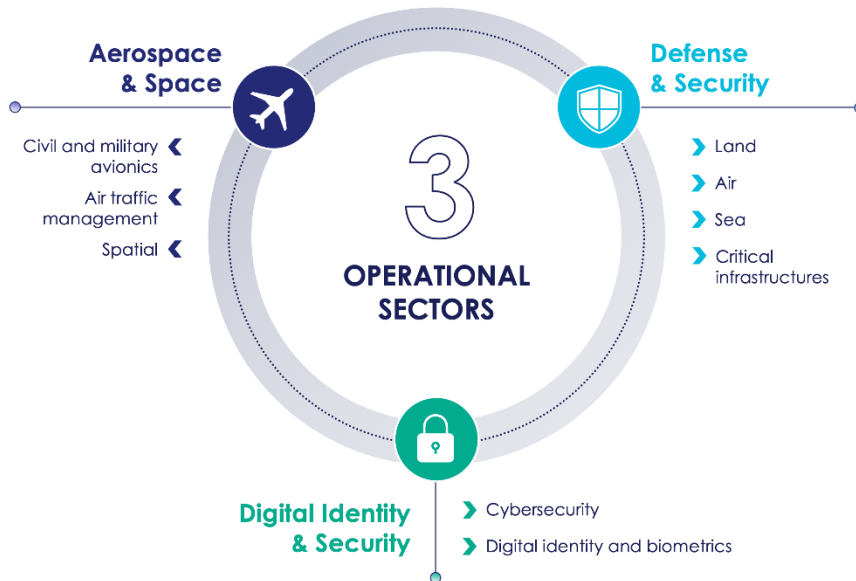
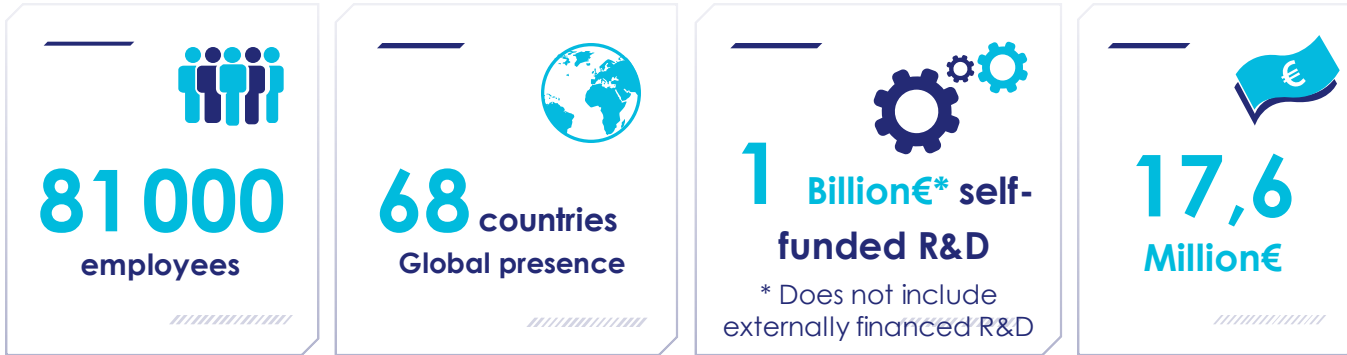
Platinum Sponsors:



Gold Sponsors:



Thales at a glance



- State and cities protection
- Science and space exploration
- Critical information systems
Digital Identity and security
- Cloud security and data encryption

- **#1 eSIM IoT provider**
Thales is the market leader on industrial and automotive sectors
- Protection of **400** critical sites all over the world.
- **2 out of 3** aircrafts in the world **take off** and **land** using Thales equipment
- Cybersecurity solutions for **9 of the top 10** internet giants.

Vision for IoT



Remi
DE FOUCHIER
SVP Strategy, Mobile
Connectivity Solutions at Thales
Digital Identity and Security said:



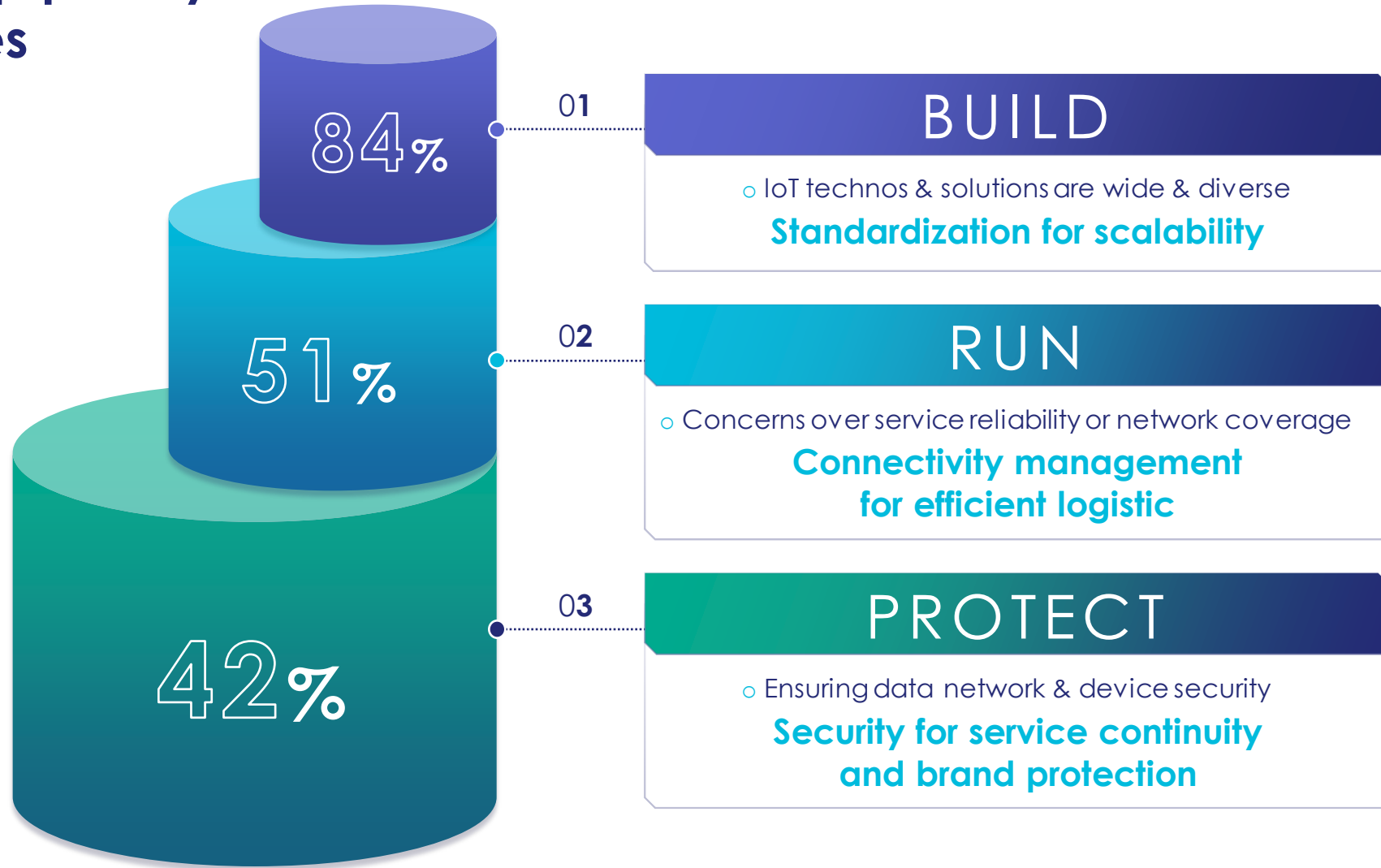
IoT demands greater simplification, more orchestration and right level of security for each use case.

We already collaborate with hundreds of OEMs and IoT service providers and we can address their challenges, based on 3 pillars:

BUILD, RUN, PROTECT

- Build covers design
- Run means production, deployment and maintenance
- Protect encompasses the continuous virtuous cybersecurity

Enterprises top priority IoT challenges



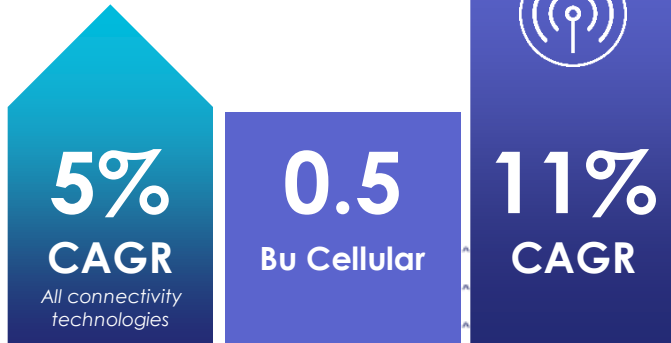
Source: Kaleido Intelligence

Cellular is moving to eSIM

CELLULAR IOT IS GROWING

2027 Annual Shipments
Incl. Auto, excl. China

2.5_{Bu}



IOT IS MOVING TO ESIM

eSIM/iSIM adoption
is being embraced



Enterprises are or plan to adopt eSIM for greater flexibility



- Standardized & certified common criteria EAL4+ hardware Root of Trust
- Efficient connectivity management
- Scalable security

What enterprises say

Large global smart metering company

- I provide a **global connectivity** but some customers want to use their own **local** one
- I want to use **NB-IoT for battery powered** devices but **GSMA M2M cannot be used**
- **Security is a subject**, use cases, ownership, provisioning, trust in production

Aircraft manufacturer

- I need to use **local connectivity** when the aircraft lands in a any country
- I need **reversibility** and cannot depend on a single connectivity provider

Track & trace company

- **Permanent roaming is forbidden** in some countries
- Secured **device to cloud** is a must

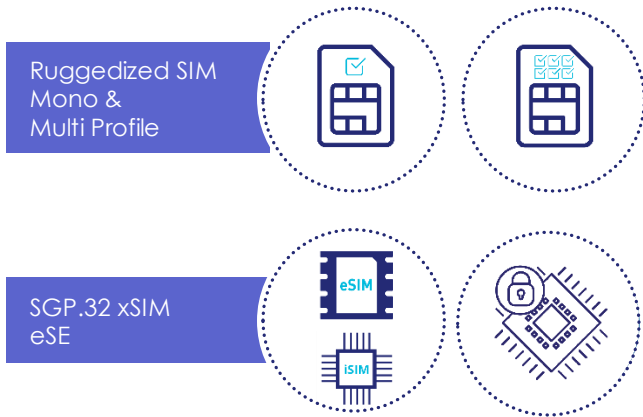
Leading IoT connectivity provider in Europe

- I want to **optimize connectivity costs** by using **local partners** but with eSIM M2M, this is too **costly and slow**
- **Roaming agreements can change** anytime

Enabling a dynamic circle of trust all along device life cycle: connecting and protecting assets and data from cyber threats.

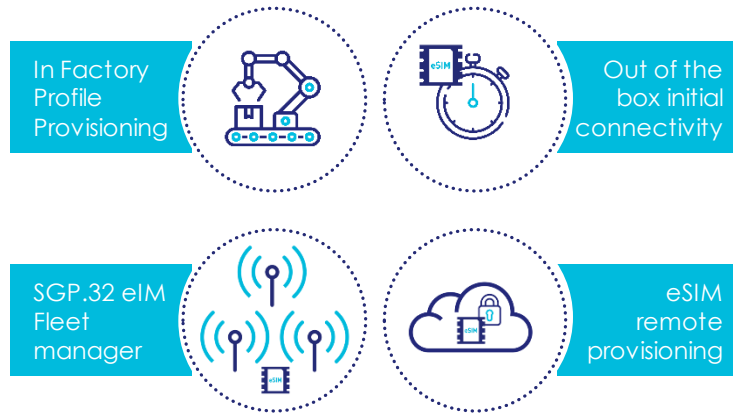
BUILD

- Range of industry grade, standardized, futureproof hardware to securely connect devices.



RUN

- Connectivity Suite enabling a secure, global, resilient, cost-effective connectivity from production to operation.



PROTECT

- Cyber Protection Suite to protect IoT **devices and data** from factory to the field, from edge to cloud.



Thales goes beyond the standards to address massive IoT



GO BEYOND CONNECTIVITY management standards

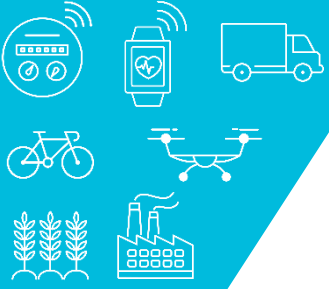
- **No impact on device design and manufacturing**
self contained solution
- **Resilient connectivity**
fallback, rollback, remote configuration
- **Local rules & smart monitoring of device context**
location, network quality, change of connectivity
- **Bring ultimate flexibility and simplicity**
Fleet management and business rules



SECURITY management to address massive IoT DIVERSITY

- **Security by design for IoT use cases**
Data to cloud, firmware update, secure boot,
secure storage, consulting services
- **Supports in-factory and touchless provisioning**
- **Manage security over the whole device lifecycle**
Advanced key management and PKI
- **360° security assessment**
Audit, pen test,...

Take away



**The eSIM
IoT standard
SGP.32
enables
massive IoT**

///////



**Security
requirements
and use cases
are very diverse
in massive IoT**

///////



**Thales
delivers true
value add turning
new standards into
practical services**

///////

Thank YOU!

