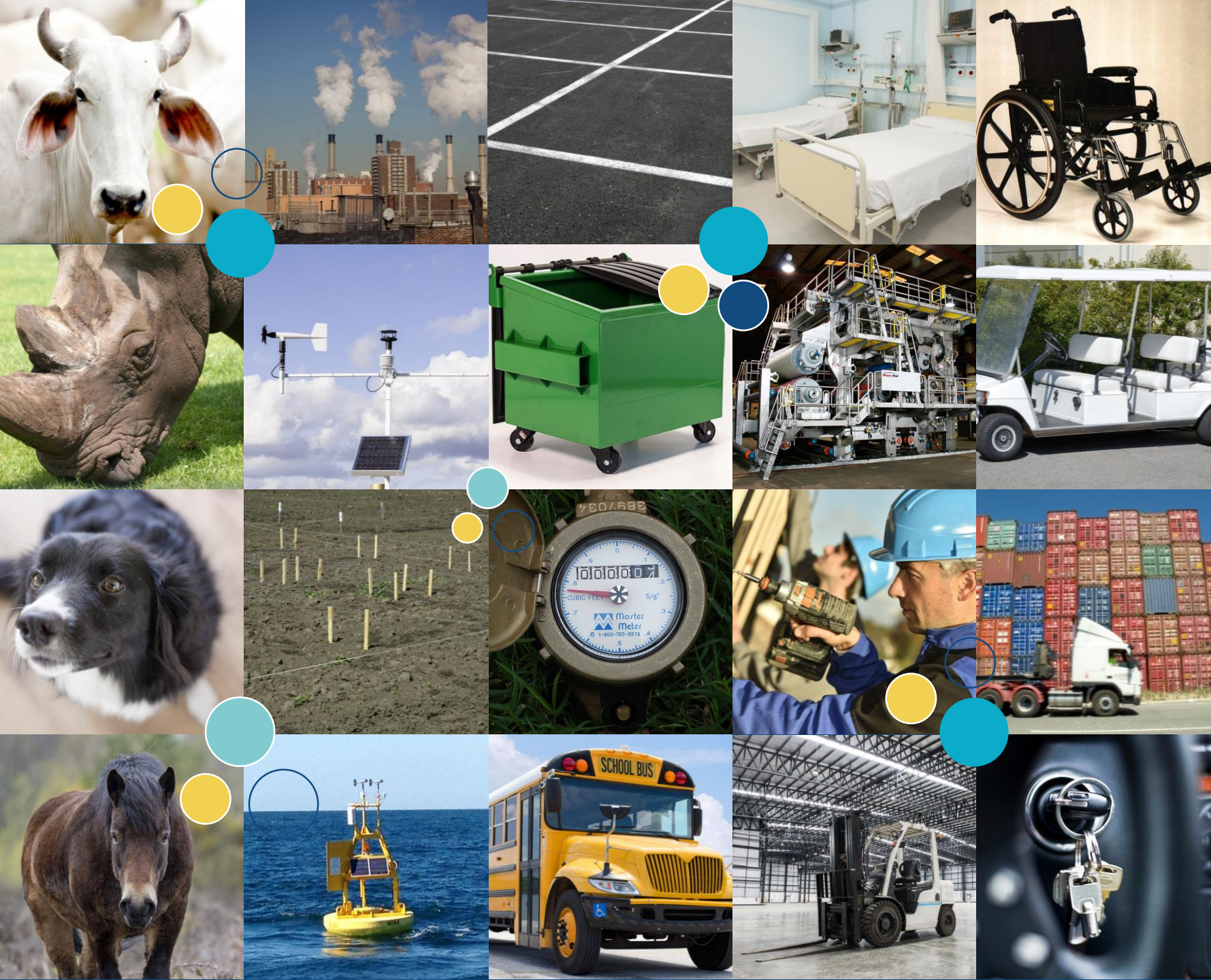


Customer Success: Asset Tracking & Monitoring



9/11/17

- **IOT Technology Company**
- **Focus on customer ROI through Power and Data Efficiency**
 - **Efficient data transmission** – IOT information via LTE-M *~100x more expensive per MB* than traditional cellular.
 - **Longer device battery life** – Batteries and their replacement cycle are often #1 HW/maintenance cost driver.
- **Architecturally flexible, scalable, and extensible** – LPWAN (LoRa), LTE-M, BLE, Wifi, NB-IOT, etc.



 Link Labs

Asset Tracking and Monitoring: A “Killer App”

Asset Tracking Architecture



**BLE
Asset Tag**



**BLE
Access Points**



**BLE Reference
Point (Beacon)**



Patented

Connectivity

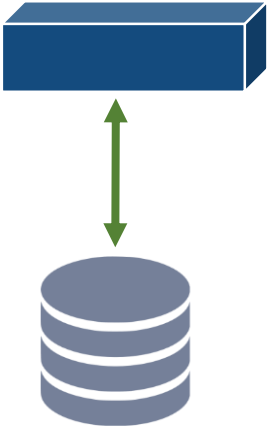


LPWAN

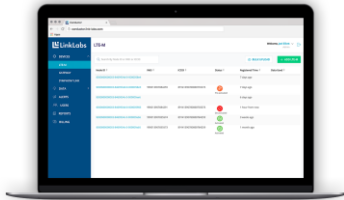


WiFi

Platform



Application



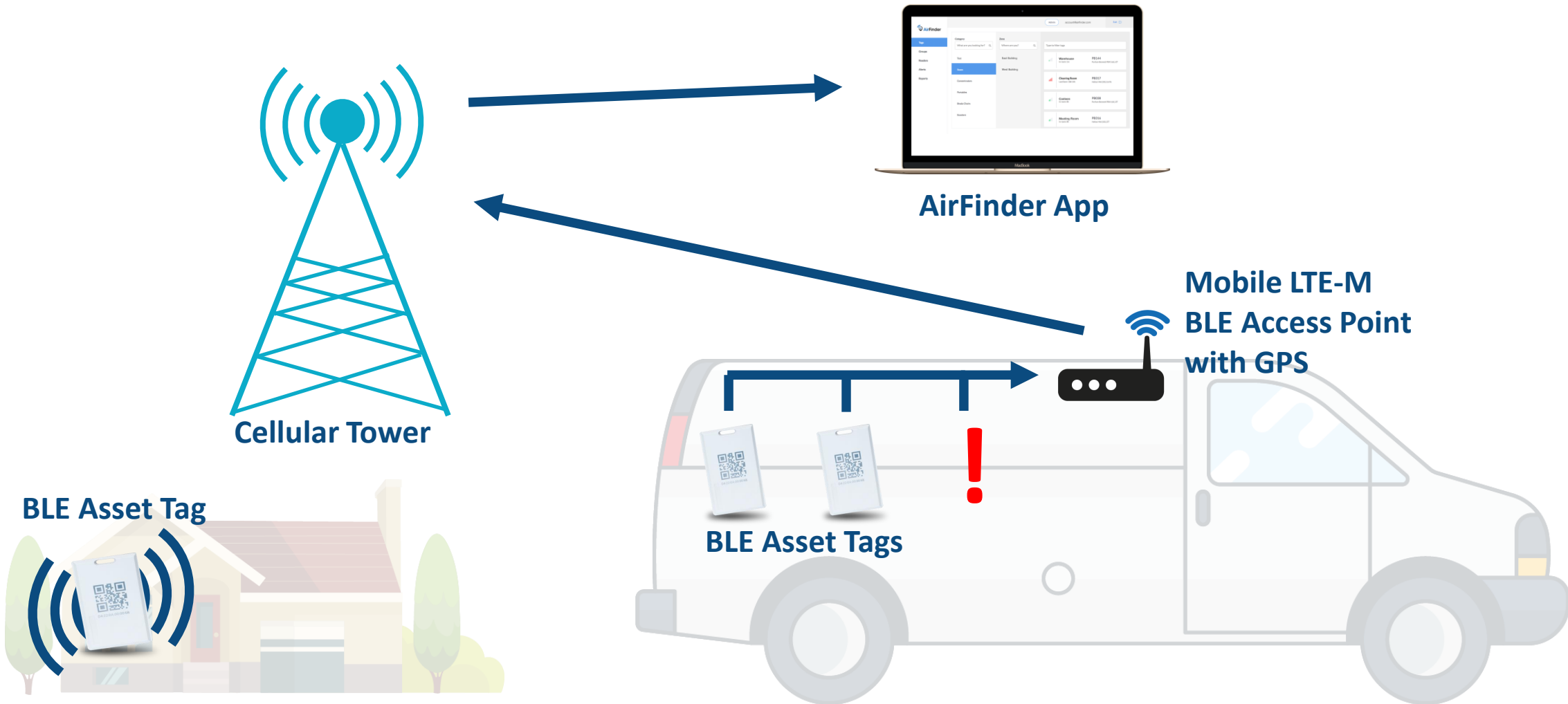
Architecture Drives System Performance



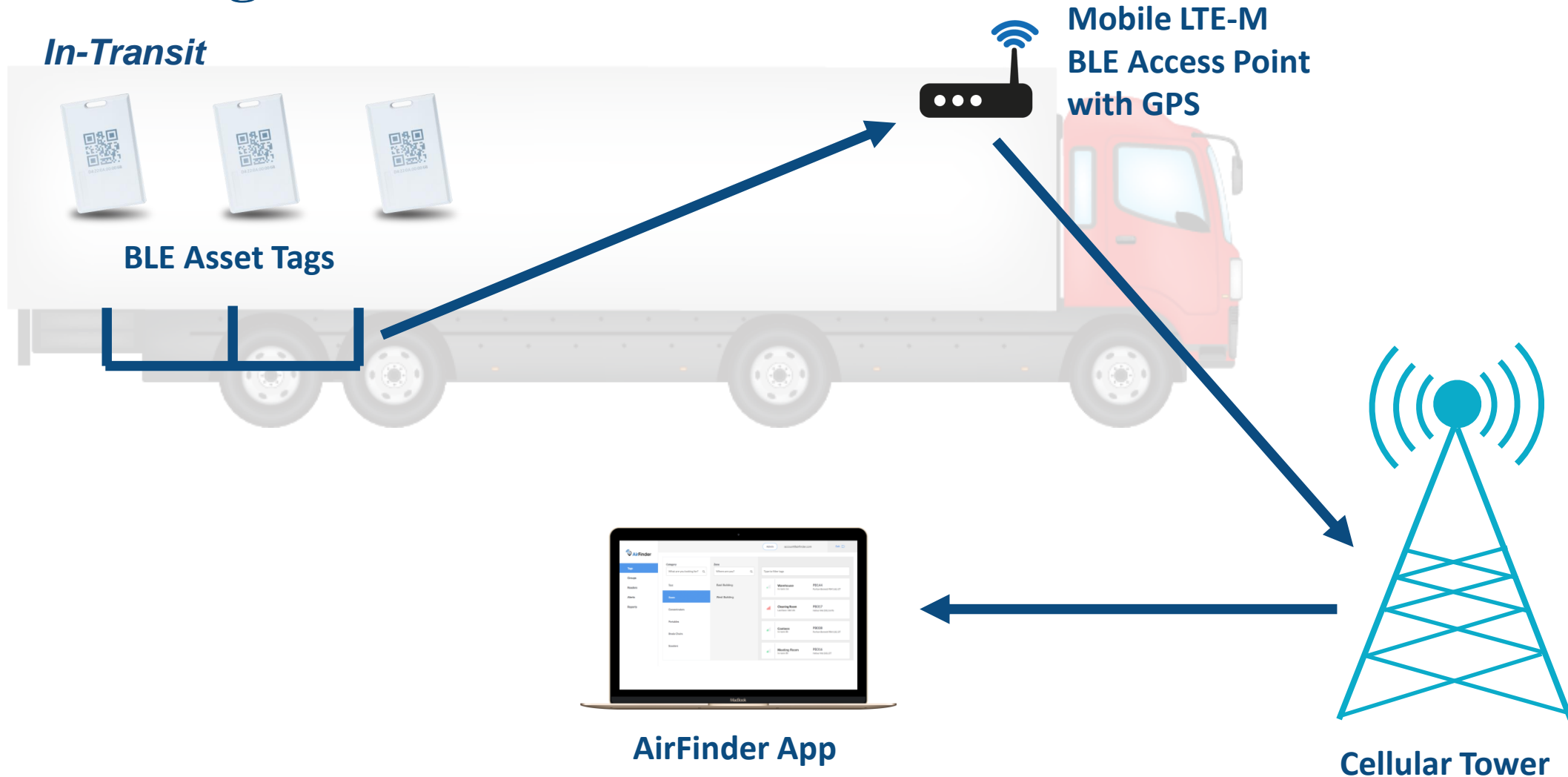
When compared to tags that beacon and no reference points:

- *Lower cost:* 10-100x less data flowing through backhaul (critical if LTE-M)
- *Higher accuracy:* location accuracy derived by density of low-cost reference points, vs. density of higher-cost access points
- *Better latency:* < 5 seconds vs. ~2 minutes
- *Greater scalability:* high density of tags possible—tags acknowledged and then quiet
- *Easier to deploy:* tags, reference points, and access points all battery powered

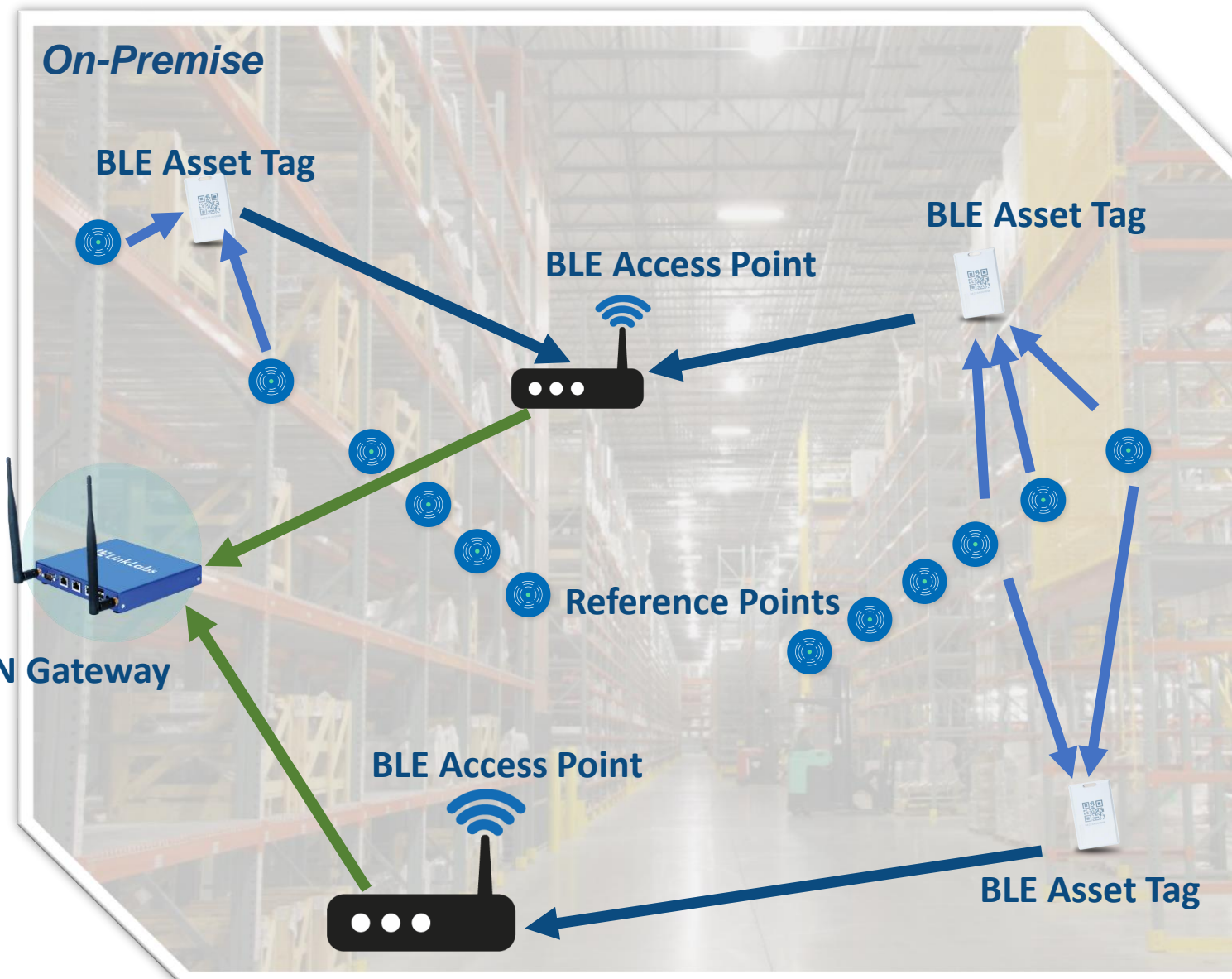
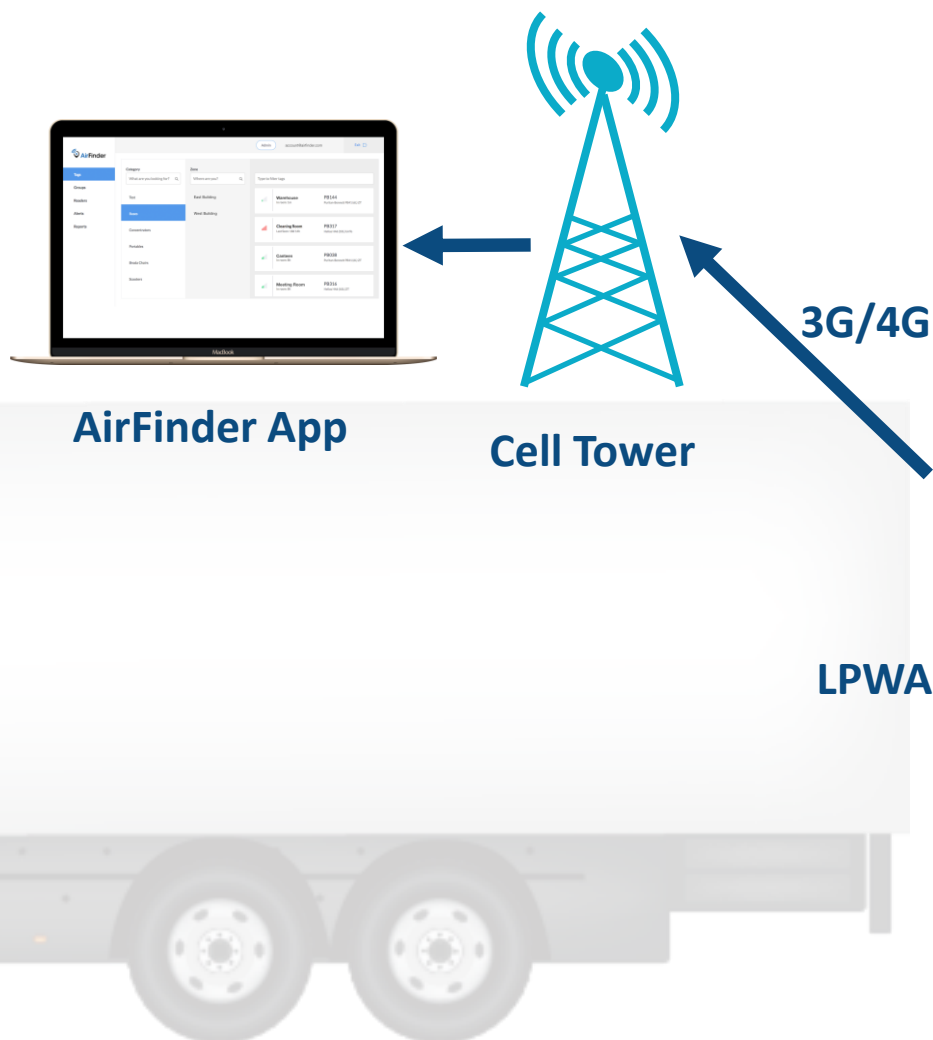
Use Case #1: Fleet Vehicle Equipment Tracking and Loss Prevention.



Use Case #2a: Seamless In-Transit/On-Premise Tracking.



Use Case #2b: Seamless In-Transit/On-Premise Tracking.



Use Case #3: Industrial Tool Carts (Asset Grouping); Equipment Monitoring

- Group of tools and calibration equipment need to be kept on same cart
- Cart reference beacon used to determine if tools on/off the cart
- Cart itself also tagged and tracked
- Equipment is also monitored via BLE equipped sensors; backhauled using same Access Point infrastructure

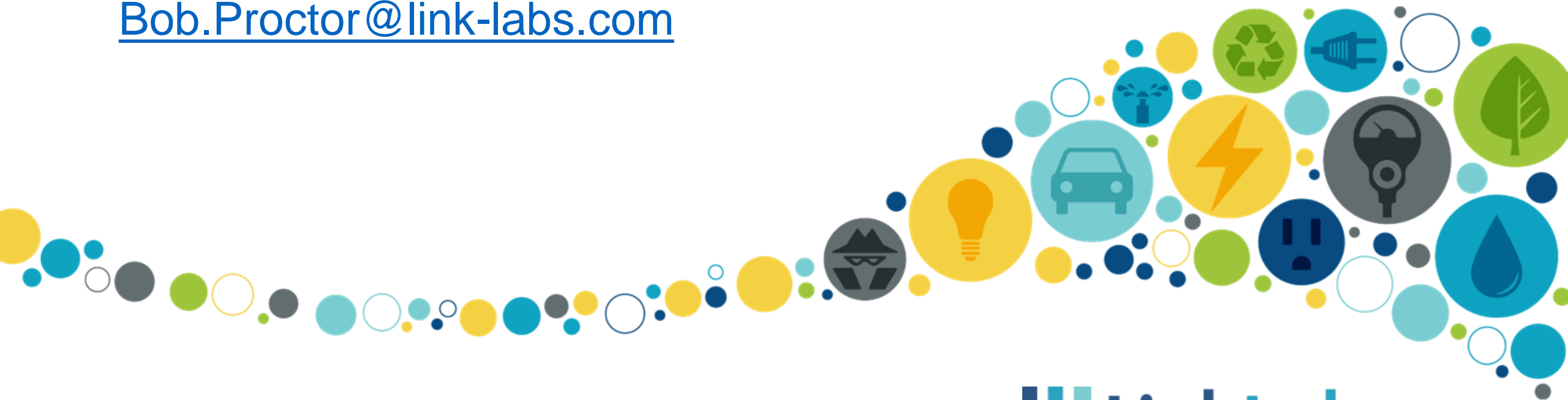


Use Case #4 And Beyond

- **Low-Cost hospital Real-Time Location System (RTLS)**
- **Tools, people, and material flows on construction sites**
- **Desk-level tracking of car keys at auto-dealers**
- **People tracking for space utilization/optimization in office buildings**
- **Pallet and commercial food container tracking**



Bob.Proctor@link-labs.com



 **LinkLabs**