



Mobile360
Digital Societies

APAC IoT INNOVATION SUMMIT

Kuala Lumpur 24-26 Sept 2019



#MOBILE360

Connectivity Sponsor: **maxis**



Kuala Lumpur 24-26 Sept 2019

Session 3: IoT Capability Beyond Connectivity

Kuala Lumpur 24-26 Sept 2019

Session 3: Smart Utility



Ali Fahd Ahmad
Head of Marketing
Jazz



Dr. Gul Muhammad Khan
Director
Company of Intelligent Systems
and Networks Research
(CISNR)



JAZZ | GSMA | CISNR



Enabling Access To Utility Services By Leveraging Mobile Technologies



Jazz as Market Leader



59 Million+ Subscribers



30K+ Business Accounts



Converged ICT Solutions



M2M & IoT Enablement solutions

Surveillance Solutions

- Centralized Viewing Capability
- Remote viewing capability
- Live View with Storage

Cold Chain Monitoring

- Temperature Monitoring
- Malfunctioning identification
- Commercial Power Availability

Asset & Fleet Management

- Real-time locations
- Fuel & Mileage reporting
- Speed analysis
- Vehicle immobilizer
- Temperature Monitoring



Smart Metering & Retail

- Heat Resistant SIMs
- Remote Meter Reading
- Remote Monitoring & Controls

IoT Devices

- Cameras
- Routers
- Bio-Metric Devices
- Tracking Devices
- Sensors & Others.

M2M Control Center

- Monitoring and Control
- Real-time data usage
- Dashboard/Reporting



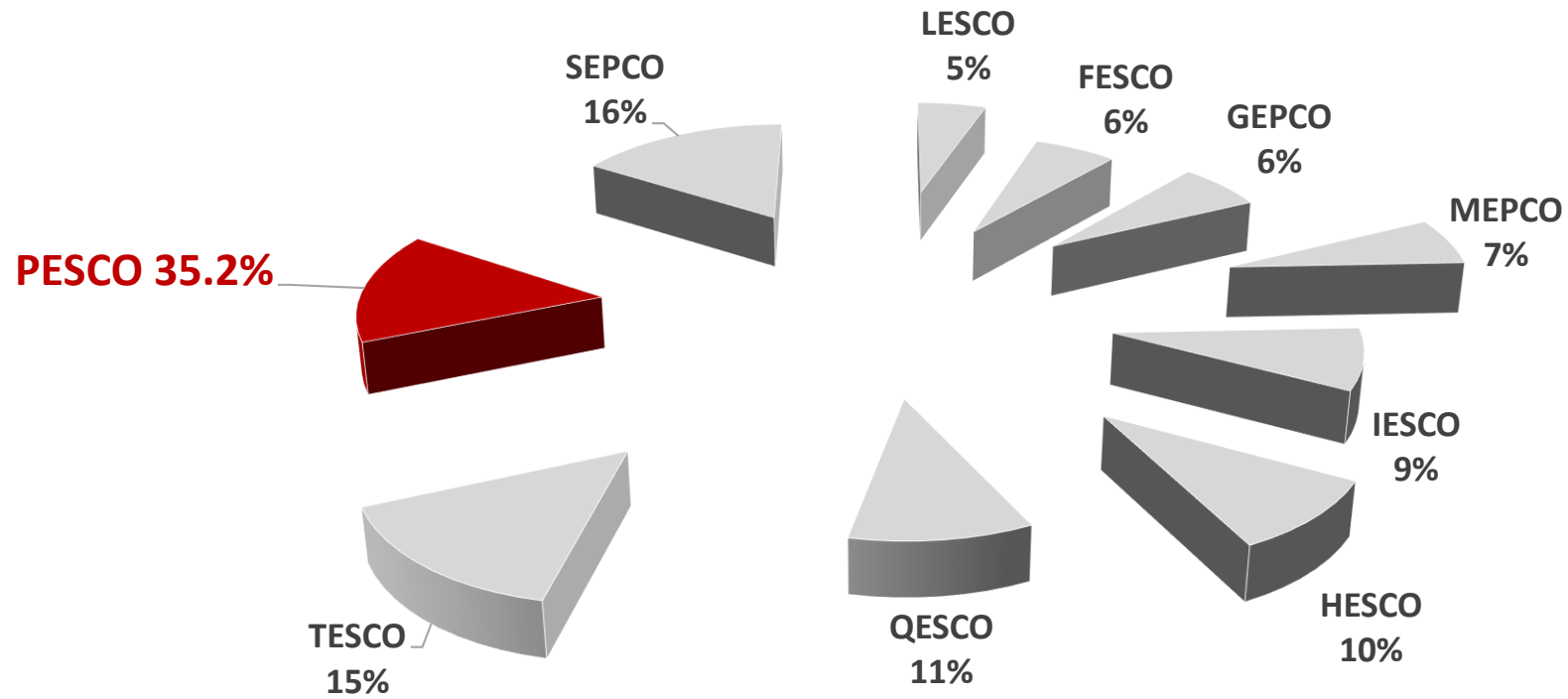


**ELECTRICITY IS THE THIRD MOST STOLEN
COMMODITY FOLLOWING CREDIT CARD
INFORMATION AND VEHICLES**





Technical Losses



29%
Line Losses

USD
2.5
Bn





ELECTRICITY INFRASTRUCTURE CHALLENGES



Meter Tampering & Bypassing



KUNDA

(hooking up the power lines)

Ageing Infrastructure & Electricity theft

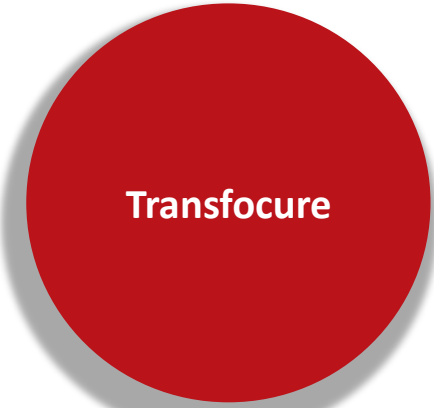
Imbalance between electricity Supply and Demand

Integration & Management of Renewable Energy

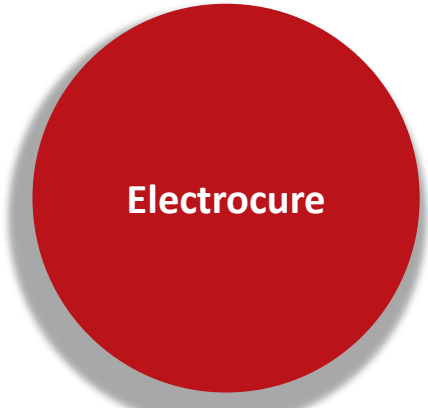




Technical Implementation Architecture



- Meter-less Architecture
- Theft Detection Solution
- Secure & Affordable Set-up



- Load balancing Transformer Device
- Automated Meter Data Collection
- Enhanced Equipment Life

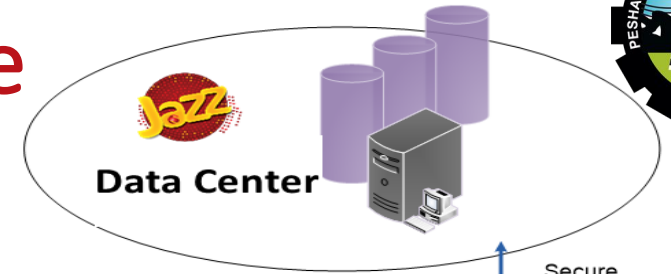


Solution

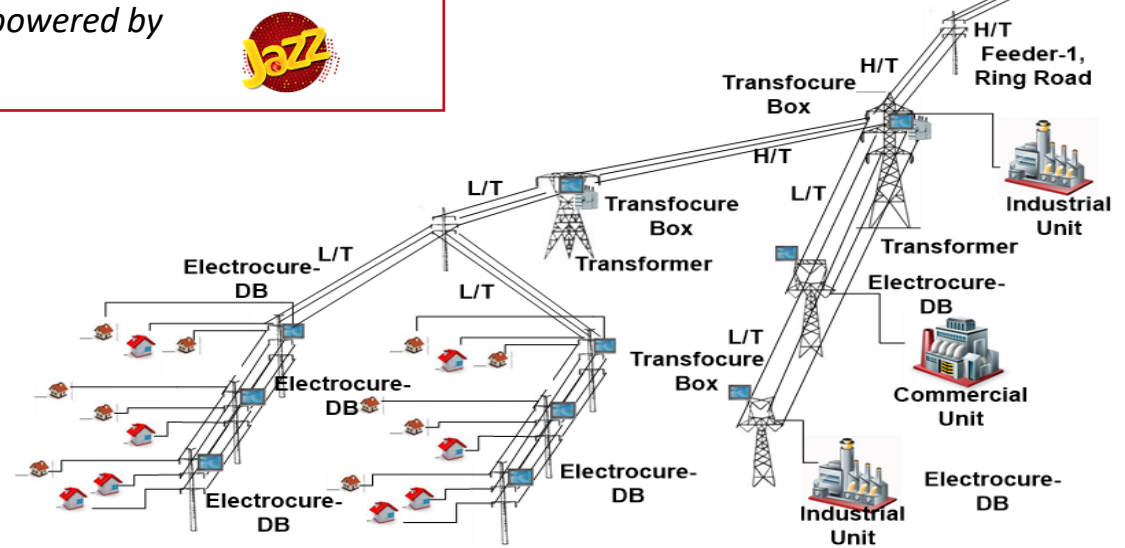
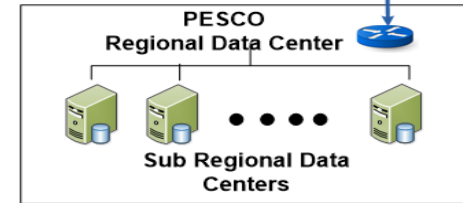
RAM Routing Access Module



Real-Time Data Collection is powered by 



Secure Weblink





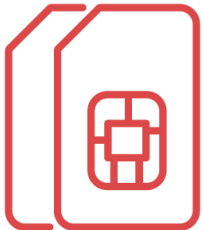
JAZZ CISNR COLLABORATIVE SOLUTION



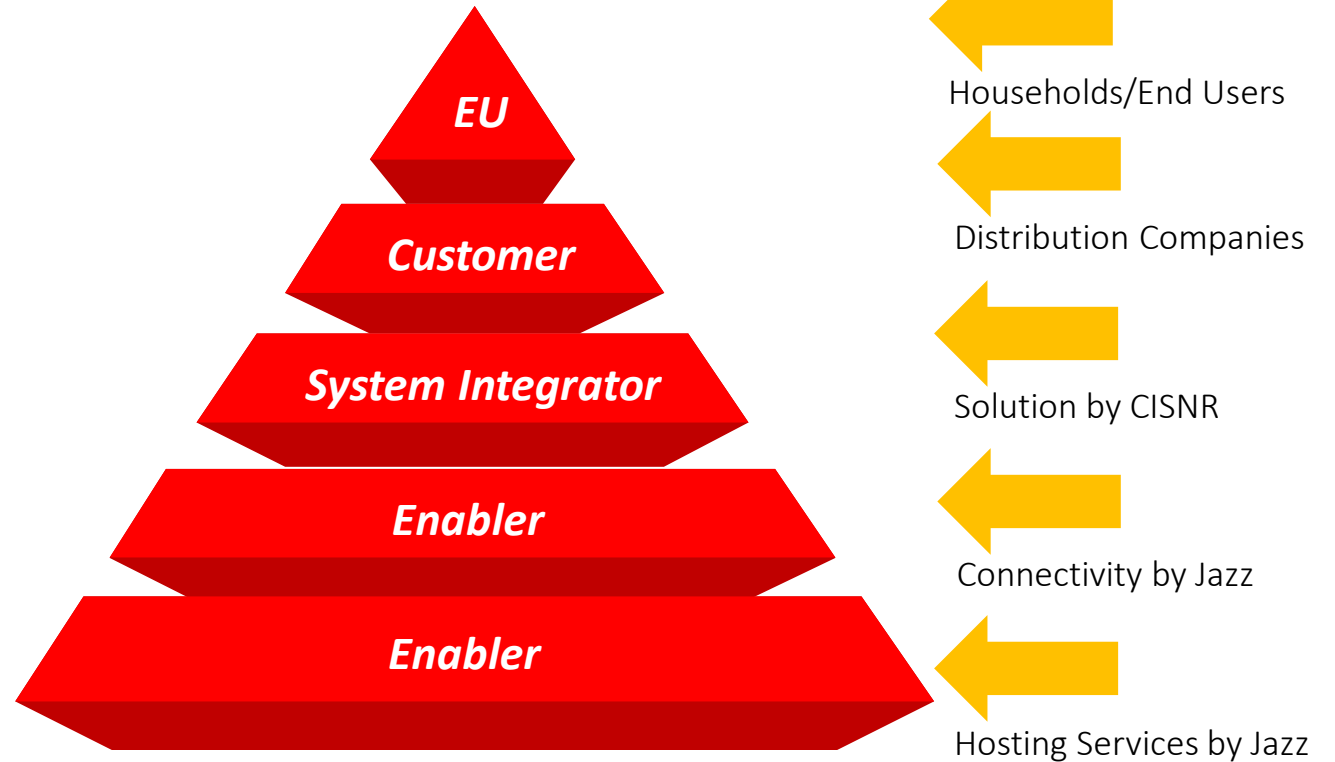
Jazz as an Enabler



Data Center
Hosting & Compute

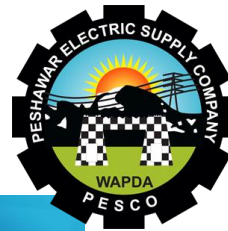


Connectivity
M2M Connectivity





Real-time Data Capturing



TRANSFOCURE-TRANSFORMER SMART METERING

Electrocure | Dashboard | In Feeders | Out Feeders | Transformers | Distribution Boxes | Connections | Faults | Log Out

Transformer Dashboard

Home > Transformer Dashboard

Transformer 1 --- KVA Graph

Date	Series 1 (KVA)	Series 2 (KVA)	Series 3 (KVA)
2019-09-02 16:00	0.5	0.5	1.5
2019-09-02 16:30	0.5	0.5	3.5
2019-09-02 17:00	0.5	0.5	1.5
2019-09-02 17:30	0.5	0.5	1.5
2019-09-02 18:00	0.5	0.5	1.5
2019-09-02 18:30	0.5	0.5	1.5
2019-09-02 19:00	0.5	0.5	1.5
2019-09-02 19:30	0.5	0.5	1.5
2019-09-02 20:00	0.5	0.5	1.5
2019-09-02 20:30	0.5	0.5	1.5
2019-09-02 21:00	0.5	0.5	1.5
2019-09-02 21:30	0.5	0.5	1.5
2019-09-02 22:00	0.5	0.5	1.5
2019-09-02 22:30	0.5	0.5	1.5
2019-09-02 23:00	0.5	0.5	1.5
2019-09-02 23:30	0.5	0.5	1.5
2019-09-03 00:00	0.5	0.5	1.5
2019-09-03 00:30	0.5	0.5	1.5
2019-09-03 01:00	0.5	0.5	1.5
2019-09-03 01:30	0.5	0.5	1.5
2019-09-03 02:00	0.5	0.5	1.5
2019-09-03 02:30	0.5	0.5	1.5
2019-09-03 03:00	0.5	0.5	1.5
2019-09-03 03:30	0.5	0.5	1.5
2019-09-03 04:00	0.5	0.5	1.5
2019-09-03 04:30	0.5	0.5	1.5
2019-09-03 05:00	0.5	0.5	1.5
2019-09-03 05:30	0.5	0.5	1.5
2019-09-03 06:00	0.5	0.5	1.5
2019-09-03 06:30	0.5	0.5	1.5
2019-09-03 07:00	0.5	0.5	1.5
2019-09-03 07:30	0.5	0.5	1.5
2019-09-03 08:00	0.5	0.5	1.5
2019-09-03 08:30	0.5	0.5	1.5
2019-09-03 09:00	0.5	0.5	1.5
2019-09-03 09:30	0.5	0.5	1.5
2019-09-03 10:00	0.5	0.5	1.5
2019-09-03 10:30	0.5	0.5	1.5
2019-09-03 11:00	0.5	0.5	1.5
2019-09-03 11:30	0.5	0.5	1.5
2019-09-03 12:00	0.5	0.5	1.5
2019-09-03 12:30	0.5	0.5	1.5
2019-09-03 13:00	0.5	0.5	1.5
2019-09-03 13:30	0.5	0.5	1.5
2019-09-03 14:00	0.5	0.5	1.5
2019-09-03 14:30	0.5	0.5	1.5
2019-09-03 15:00	0.5	0.5	1.5
2019-09-03 15:30	0.5	0.5	1.5
2019-09-03 16:00	0.5	0.5	1.5
2019-09-03 16:30	0.5	0.5	1.5
2019-09-03 17:00	0.5	0.5	1.5
2019-09-03 17:30	0.5	0.5	1.5
2019-09-03 18:00	0.5	0.5	1.5
2019-09-03 18:30	0.5	0.5	1.5
2019-09-03 19:00	0.5	0.5	1.5
2019-09-03 19:30	0.5	0.5	1.5
2019-09-03 20:00	0.5	0.5	1.5
2019-09-03 20:30	0.5	0.5	1.5
2019-09-03 21:00	0.5	0.5	1.5
2019-09-03 21:30	0.5	0.5	1.5
2019-09-03 22:00	0.5	0.5	1.5
2019-09-03 22:30	0.5	0.5	1.5
2019-09-03 23:00	0.5	0.5	1.5
2019-09-03 23:30	0.5	0.5	1.5
2019-09-04 00:00	0.5	0.5	1.5
2019-09-04 00:30	0.5	0.5	1.5
2019-09-04 01:00	0.5	0.5	1.5
2019-09-04 01:30	0.5	0.5	1.5
2019-09-04 02:00	0.5	0.5	1.5
2019-09-04 02:30	0.5	0.5	1.5
2019-09-04 03:00	0.5	0.5	1.5
2019-09-04 03:30	0.5	0.5	1.5
2019-09-04 04:00	0.5	0.5	1.5
2019-09-04 04:30	0.5	0.5	1.5
2019-09-04 05:00	0.5	0.5	1.5
2019-09-04 05:30	0.5	0.5	1.5
2019-09-04 06:00	0.5	0.5	1.5
2019-09-04 06:30	0.5	0.5	1.5
2019-09-04 07:00	0.5	0.5	1.5
2019-09-04 07:30	0.5	0.5	1.5
2019-09-04 08:00	0.5	0.5	1.5
2019-09-04 08:30	0.5	0.5	1.5
2019-09-04 09:00	0.5	0.5	1.5
2019-09-04 09:30	0.5	0.5	1.5
2019-09-04 10:00	0.5	0.5	1.5
2019-09-04 10:30	0.5	0.5	1.5
2019-09-04 11:00	0.5	0.5	1.5
2019-09-04 11:30	0.5	0.5	1.5
2019-09-04 12:00	0.5	0.5	1.5
2019-09-04 12:30	0.5	0.5	1.5
2019-09-04 13:00	0.5	0.5	1.5
2019-09-04 13:30	0.5	0.5	1.5
2019-09-04 14:00	0.5	0.5	1.5
2019-09-04 14:30	0.5	0.5	1.5
2019-09-04 15:00	0.5	0.5	1.5
2019-09-04 15:30	0.5	0.5	1.5
2019-09-04 16:00	0.5	0.5	1.5
2019-09-04 16:30	0.5	0.5	1.5
2019-09-04 17:00	0.5	0.5	1.5
2019-09-04 17:30	0.5	0.5	1.5
2019-09-04 18:00	0.5	0.5	1.5
2019-09-04 18:30	0.5	0.5	1.5
2019-09-04 19:00	0.5	0.5	1.5
2019-09-04 19:30	0.5	0.5	1.5
2019-09-04 20:00	0.5	0.5	1.5
2019-09-04 20:30	0.5	0.5	1.5
2019-09-04 21:00	0.5	0.5	1.5
2019-09-04 21:30	0.5	0.5	1.5
2019-09-04 22:00	0.5	0.5	1.5
2019-09-04 22:30	0.5	0.5	1.5
2019-09-04 23:00	0.5	0.5	1.5
2019-09-04 23:30	0.5	0.5	1.5
2019-09-05 00:00	0.5	0.5	1.5

On 131 | Offline 122 | Off 7

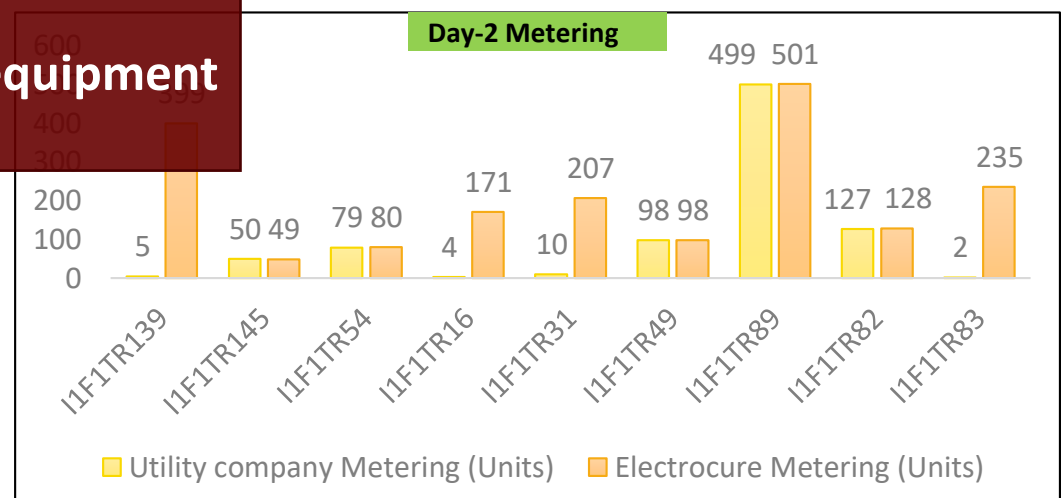
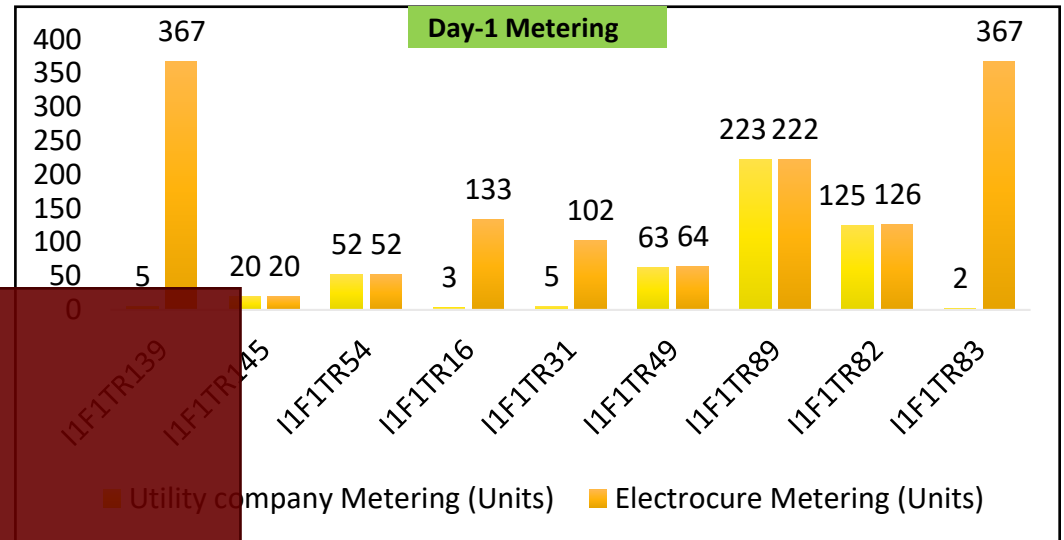
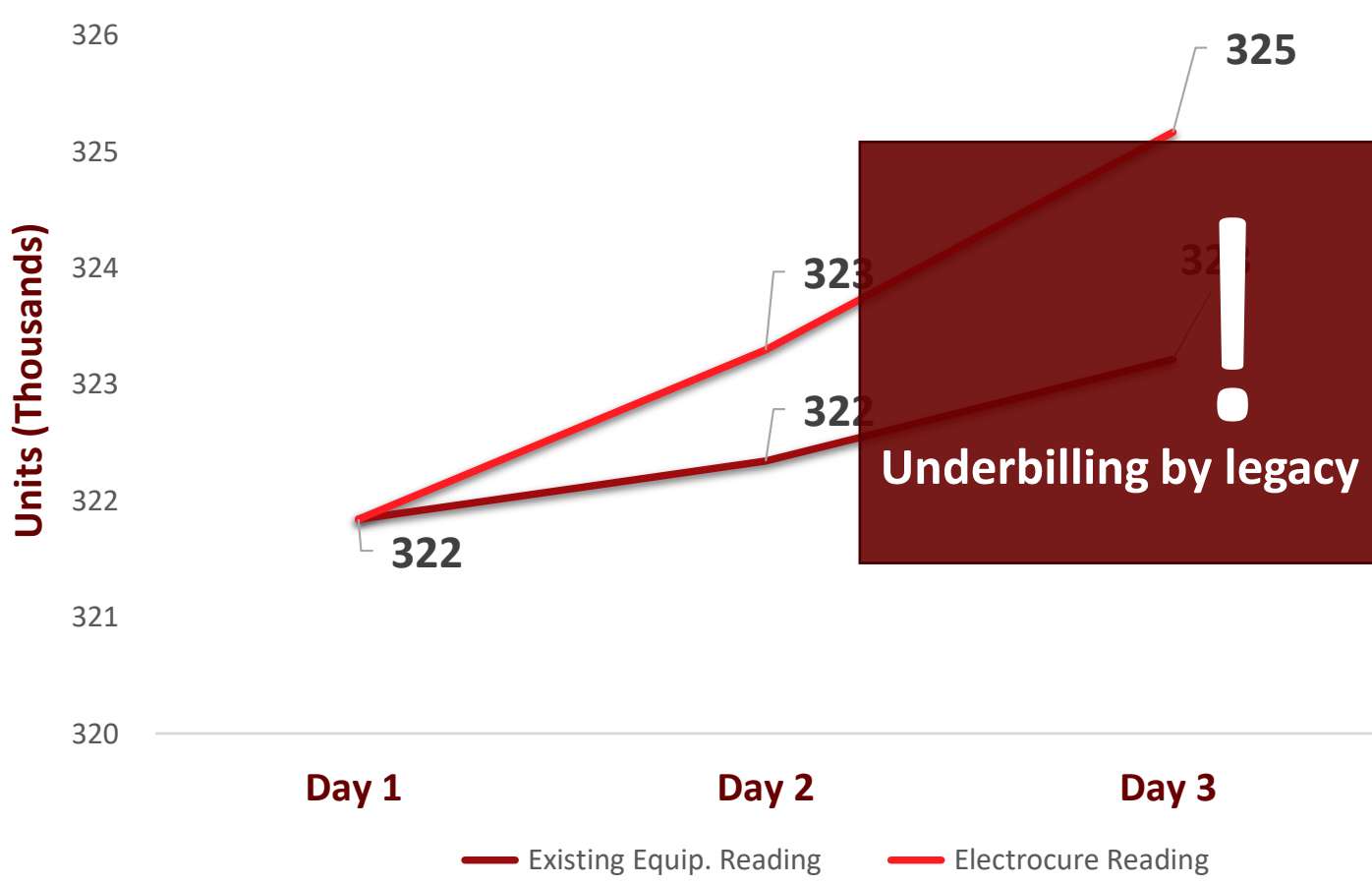
Out Feeder: All Transformers





Real-time Data Capturing

Legacy vs. Electrocare Metering - kW.h



Data captured over 9 Transformers





Potential Partnerships Opportunities

PESHAWAR ELECTRIC SUPPLY CO.



FAISALABAD ELECTRIC SUPPLY CO.



QUETTA ELECTRIC SUPPLY CO.





Thank You

