



WRC19: Priority Industry Views

Kamal Tamawa
Senior Policy Manager, SSA
GSMA

4th Annual Sub-Sahara Spectrum Management Conference
27 & 28 May 2019
Gaborone, Botswana

5G needs spectrum across three ranges



Sub-1 GHz
1 – 6 GHz
AND ABOVE
6 GHz



Sub-1 GHz Bands are in use

700 MHz

Subject of the Digital Migration

800 MHz

Popularly deployed for CDMA and 4G
LTE Band

900 MHz

Prime 2G and 3G band

Technology Neutral Licensing will be crucial to using these bands for 5G



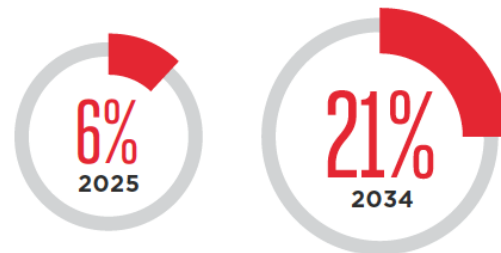
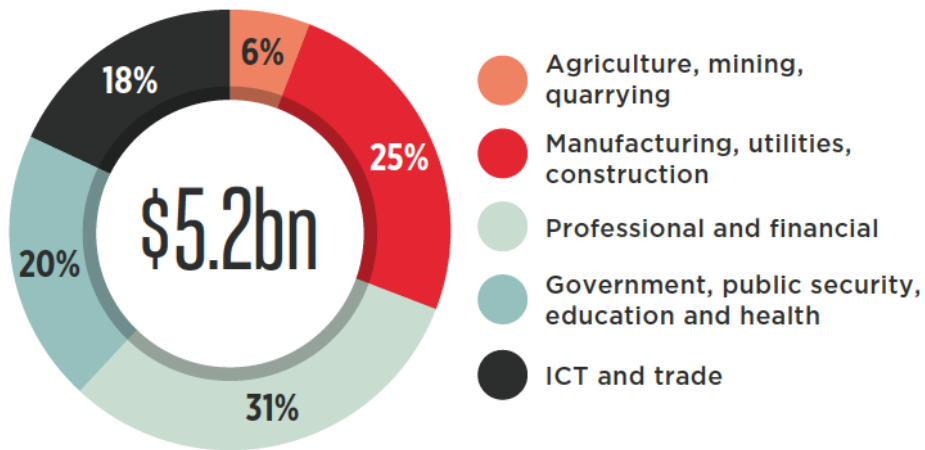
WRC-23 - new IMT AI

3 GHz Range

The GSMA believes:

- there is significant demand for further multi-regional or global harmonisation in mobile allocation and identification of the bands 3.3-3.4 and 3.4-3.8 GHz for IMT.
- the band 3.8-4.2 GHz should be made available for 5G on a national/regional basis according to market demand, including allocation of the band to the mobile service and identification for IMT as necessary.

Sub-Saharan Africa mmWave 5G impact and contribution



The share of 5G services using mmWaves





A lot at stake – WRC-19

A successful identification of spectrum for IMT under Agenda Item 1.13 is vital to realise the full potential of 5G networks

The GSMA supports
the **26 GHz and 40
GHz** bands

The GSMA also
supports **66-71 GHz**

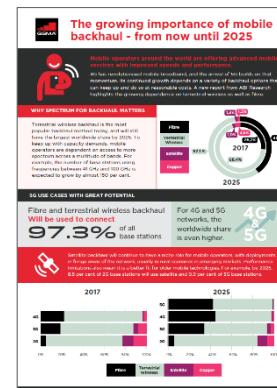
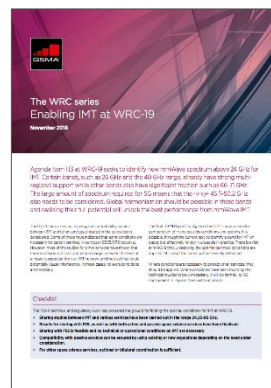
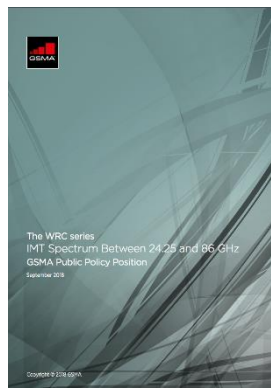
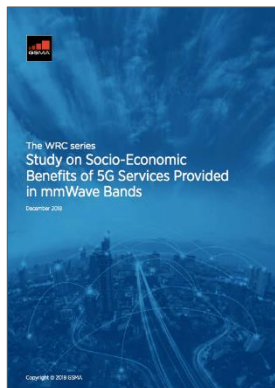
Due to the large amount
of spectrum needed for
5G services, the range
45.5-52.6 GHz also
needs to be considered

Technical studies show coexistence between IMT and other services is possible

The result will have a major impact on the future of 5G



Read more about



<https://www.gsma.com/spectrum/wrc-series>

<https://www.gsma.com/spectrum/5g-spectrum-guide/>



MOBILE CHANGES EVERYTHING

mmWaves: unlock the full potential of 5G